

WAAS CH 69628 W28A	APP CRS 280°	Rwy Idg TDZE Apt Elev	5004 868 868
--	------------------------	-----------------------------	---

RNAV (GPS) RWY 28

FAIRFIELD COUNTY (LHQ)

RNP APCH.

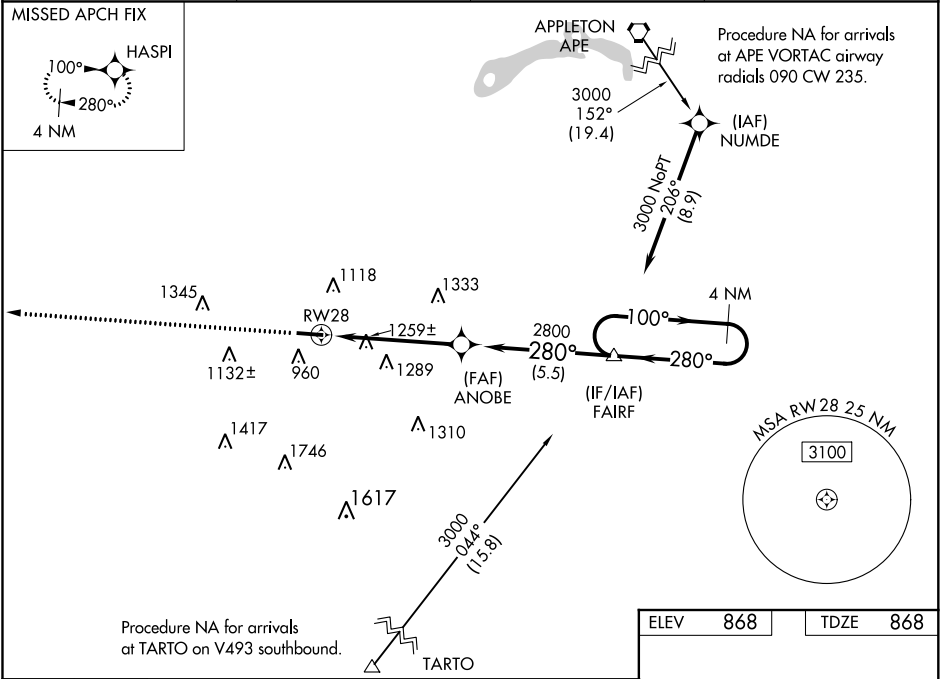
▼

Baro-VNAV NA when using Rickenbacker Intl altimeter setting. For uncompensated Baro-VNAV systems, LNAV/VNAV NA below -24°C or above 54°C. Rwy 28 helicopter visibility reduction below ¾ SM NA. VDP NA with Rickenbacker Intl altimeter setting. When local altimeter setting not received, use Rickenbacker Intl altimeter setting and increase all DA 48 feet; increase all MDA 60 feet.

MISSED APPROACH:

Climb to 2700 direct HASPI and hold.

ASOS 118.375	COLUMBUS APP CON 134.0 279.6	CLNC DEL 121.65	UNICOM 122.725 (CTAF) 1
------------------------	--	---------------------------	-----------------------------------



2700 HASPI

*LNAV only.

*1.7 NM to RW28

RW28

ANOBE

2800

280°

100°

3000

280°

2800

GP 3.50° TCH 55

4 NM Holding Pattern

FAIRF

280° to RW28

5004 X 75

CATEGORY	A	B	C	D
LPV DA	1068-¾ 200 (200-¾)			NA
LNAV/VNAV DA	1641-2½ 773 (800-2½)			NA
LNAV MDA	1520-1 652 (700-1)			NA
CIRCLING	1520-1 652 (700-1)	1540-1 672 (700-1)		NA

REIL Rwy 10 and 28 1
MIRL Rwy 10-28 1