

APP CRS
049°

Rwy Idg
TDZE
890

Apt Elev
896

RNAV (GPS) RWY 5

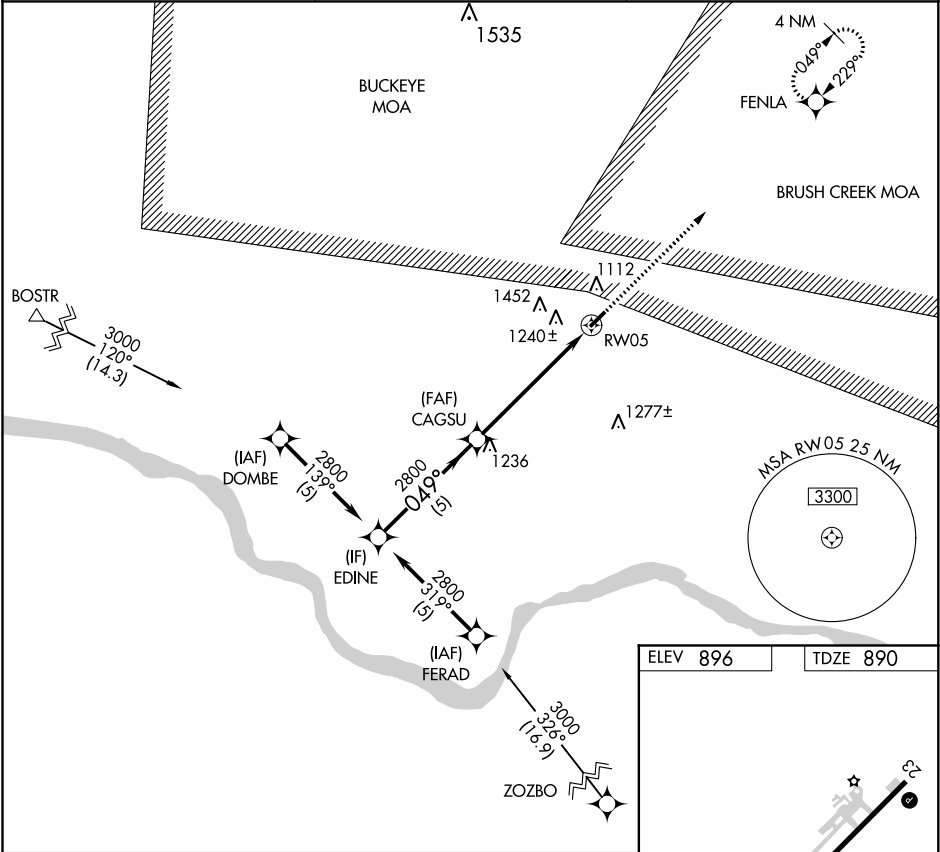
ALEXANDER SALAMON (A.M.T.)

RNP APCH.

Procedure NA at night. Rwy 5 helicopter visibility reduction below 1 SM NA.
Use Flemingsburg, Kentucky altimeter setting.

MISSED APPROACH: Climb to 2800 direct FENLA and hold.

FGX AWOS-3 118.125	INDIANAPOLIS CENTER 135.575 290.5	UNICOM 122.8 (CTAF) 1
------------------------------	---	---------------------------------



Visual Segment - Obstacles.

EDINE

CAGSU

RW05

FENLA

2800

2800

2800

2800

049°

049°

049°

049°

5 NM

5.8 NM

CATEGORY	A	B	C	D
LNAV MDA	1400-1	510 (600-1)	1400-1½ 510 (600-1½)	NA

ELEV 896

TDZE 890

REIL Rwy 5 and 23 1

MIRL Rwy 5-23 1