

WAAS CH 40238 W27A	APP CRS 273°	Rwy Idg TDZE Apt Elev	3641 708 708
----------------------------------------	------------------------	-----------------------------	-----------------------------------------

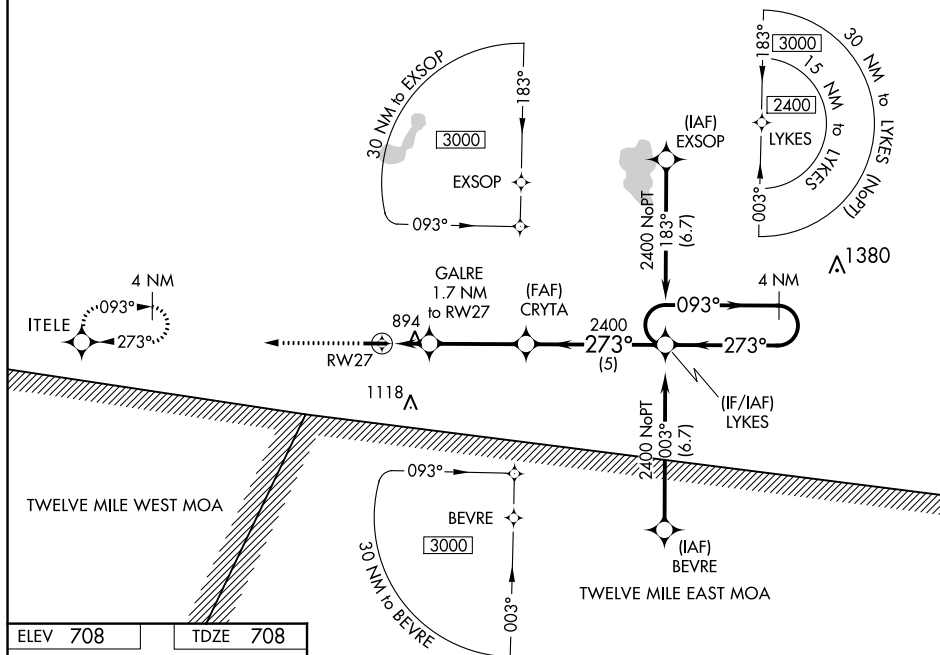
RNAV (GPS) RWY 27
ARENS FIELD (RWN)

NA Baro-VNAV NA. Use Knox altimeter setting; when not received, use Rochester altimeter setting and increase all DA/MDA 20 feet and LNAV/VNAV all Cuts visibility $\frac{1}{8}$ mile. DME/DME RNP-0.3 NA. Helicopter visibility reduction below $\frac{3}{4}$ SM NA.

MISSED APPROACH: Climb to 2400 direct ITELE hold.

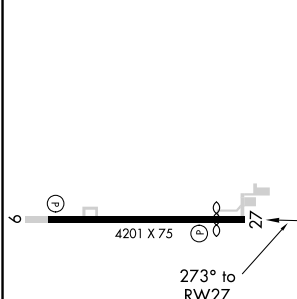
OXI AWOS-3
135.775

SOUTH BEND APP CON ★
132.05 257.8

UNICOM
122.8 (CTAF) **L**

ELEV 708

TDZE 708



2400	ITELE
------	-------

VGSI and RNAV glidepath not coincident (VGSI Angle 4.25/TCH 20).

*LNAV only.

GALRE

4 NM
Holding Pattern

CR

1

$$\frac{93^\circ}{73^\circ} \rightarrow \underline{2400}$$

RW27


—

3°.

GP 3.00°
TCH 45

Number of people who did not go to the cinema	Number of people
1	1
2	2
3	3
4	4
5	5
6	6
7	7
8	8
9	9
10	10

← 3.5 NM →

CATEGORY	A	B	C	D
LPV DA	995-1 287 (300-1)			NA
RNAV/DA VNAV	1224-1 ³ / ₄ 516 (600-1 ³ / ₄)			NA
RNAV MDA	1200-1 492 (500-1)	1200-1 ³ / ₈ 492 (500-1 ³ / ₈)		NA
 CIRCLING	1240-1 532 (600-1)	1480-2 ¹ / ₄ 772 (800-2 ¹ / ₄)		NA

MIRL Rwy 9-27 **L**
REIL Rwy 9 and 27 **L**

WINAMAC, INDIANA
Amdt 1 31MAR16

ARENS FIELD (RWN)

41°06'N-86°37'W

RNAV (GPS) RWY 27