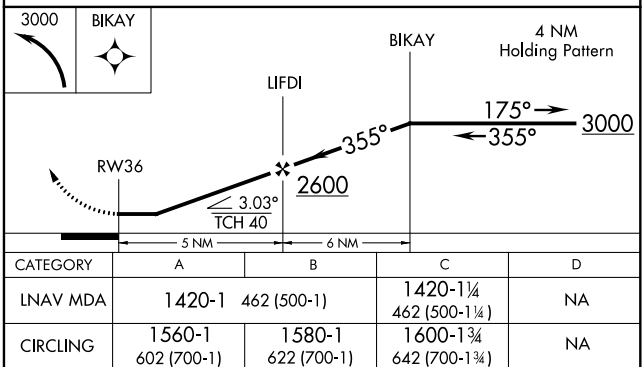
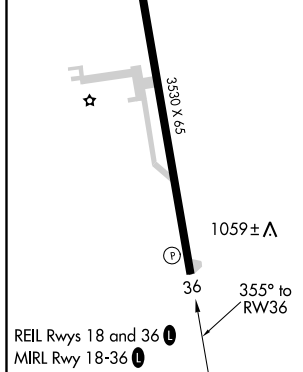
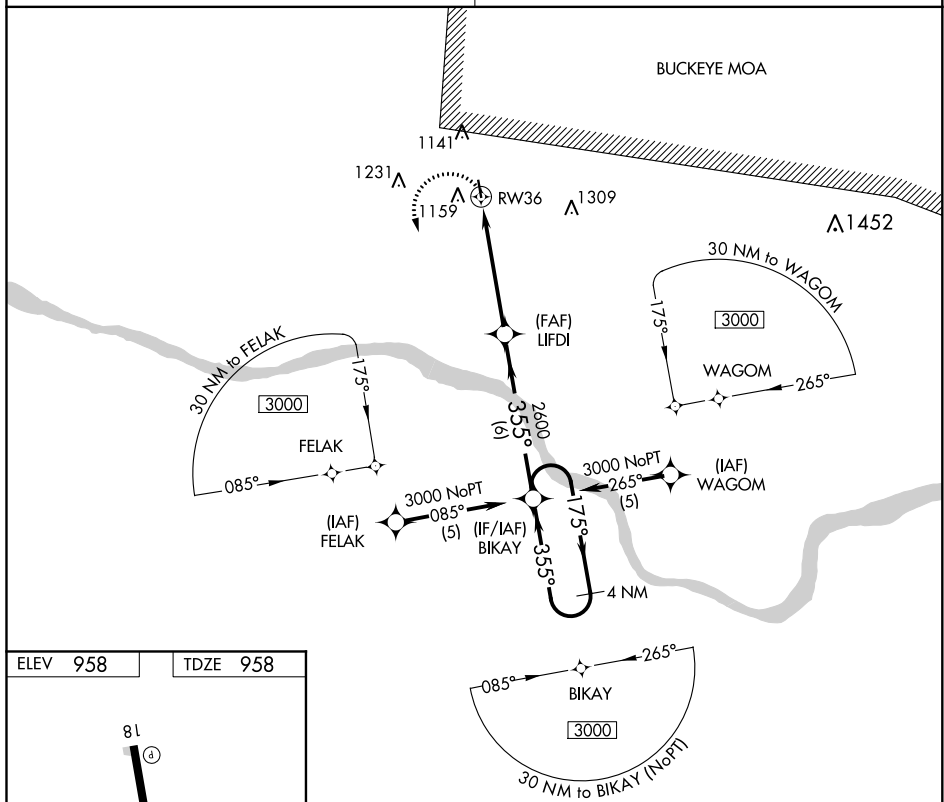


19059

# RNAV (GPS) RWY 36

## BROWN COUNTY (GEO)

**MISSED APPROACH:** Climbing left turn to 3000 direct BIKAY WP and hold.

CTAF **L**  
122.9

BROWN COUNTY (GEO)  
RNAV (GPS) RWY 36

EC-2, 03 DEC 2020 to 31 DEC 2020