

WAAS CH 56310 W25A	APP CRS 252°	Rwy Idg TDZE 860 Apt Elev 862	6005
--	------------------------	---	-------------

RNAV (GPS) RWY 25


INDIANAPOLIS RGNL (MQJ)

⚠


⚠

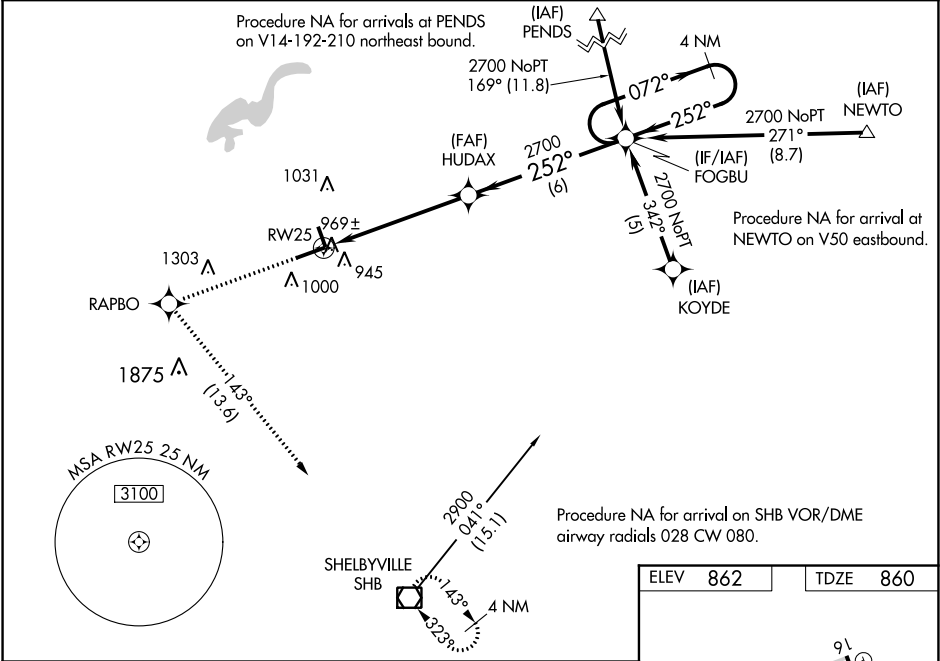
For uncompensated Baro-VNAV systems, LNAV/VNAV NA below -16°C (4°F) or above 54°C (130°F). Baro-VNAV and VDP NA when using Indianapolis Intl altimeter setting. DME/DME RNP-0.3 NA. When local altimeter setting not received, use Indianapolis Intl altimeter setting and increase all DA 55 feet and all MDA 60 feet, and increase all visibilities ½ SM. When using Indianapolis altimeter setting inoperative table does not apply. For inoperative ALS, increase LPV all Cats visibility to 1 SM.

MALSR




MISSED APPROACH:
Climb to 2900 direct RAPBO and on track 143° to SHB VOR/DME and hold.


AWOS-3 124.175	INDIANAPOLIS APP CON 127.15 317.8	CLNC DEL 119.25	UNICOM 122.975 (CTAF) 
--------------------------	---	---------------------------	---



2900



tr 143°



HUDAX

FOGBU

4 NM Holding Pattern

RW25


*1 NM to RW25

*LNAV only

1 NM

4.5 NM

6 NM

CATEGORY	A	B	C	D
LPV DA	1160-½ 300 (300-½)			
LNAV/VNAV DA	1259-¾ 399 (400-¾)			
LNAV MDA	1220-½ 360 (400-½)	1220-⅝ 360 (400-⅝)		
 CIRCLING	1340-1 478 (500-1)	1360-1½ 498 (500-1½)	1660-2½ 798 (800-2½)	

