


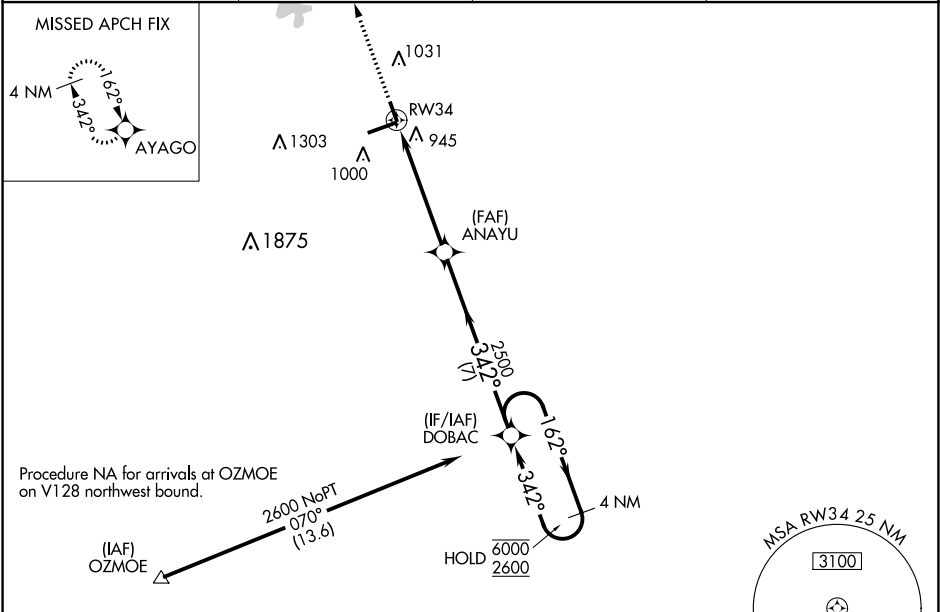
WAAS CH 45634 W34A	APP CRS 342°	Rwy Idg TDZE Apt Elev	3901 858 862
--	------------------------	-----------------------------	---

RNAV (GPS) RWY 34

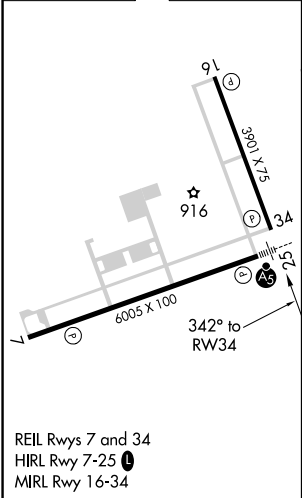
INDIANAPOLIS RGNL (MQJ)


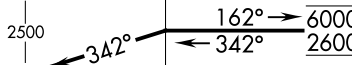


RNP APCH.		MISSED APPROACH: Climb to 2500 direct AYAGO and hold.
 NA	For uncompensated Baro-VNAV systems, LNAV/VNAV NA below -16°C (4°F) or above 54°C (130°F).	

AWOS-3 124.175	INDIANAPOLIS APP CON 127.15 317.8	CLNC DEL 119.25	UNICOM 122.975 (CTAF) 
--------------------------	---	---------------------------	---



ELEV 862	TDZE 858
-----------------	-----------------



2500 AYAGO		VGSi and RNAV glidepath not coincident (VGSi Angle 3.00/TCH 49).		4 NM Holding Pattern	
		ANAYU			
* LNAV only.		* 1.3 NM to RWY34		GP 3.00° TCH 33	
		2500			
1.3 NM		3.8 NM		7 NM	
CATEGORY	A	B	C	D	
LPV DA	1058- ³ / ₄		200 (200- ³ / ₄)		
LNAV/VNAV DA	1119- ⁷ / ₈		261 (300- ⁷ / ₈)		
LNAV MDA	1320-1	462 (500-1)	1320-1 ³ / ₈	462 (500-1 ³ / ₈)	
 CIRCLING	1340-1	478 (500-1)	1360-1 ¹ / ₂ 498 (500-1 ¹ / ₂)	1660-2 ¹ / ₂ 798 (800-2 ¹ / ₂)	