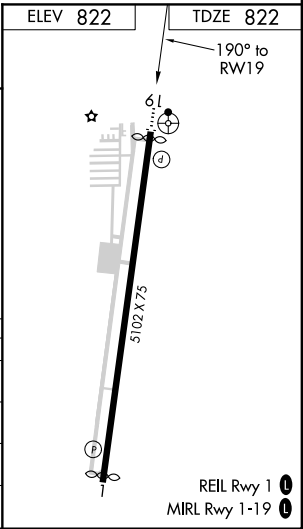
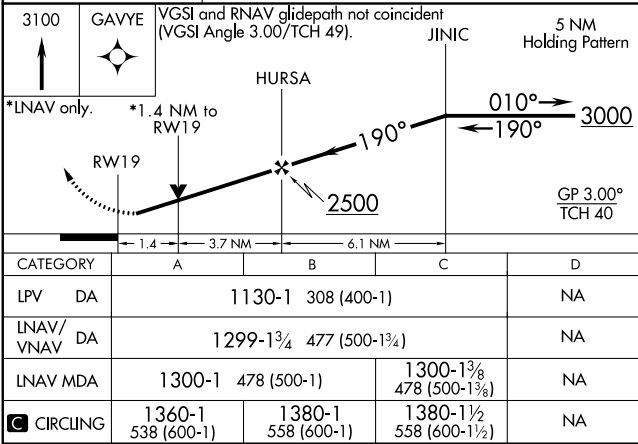
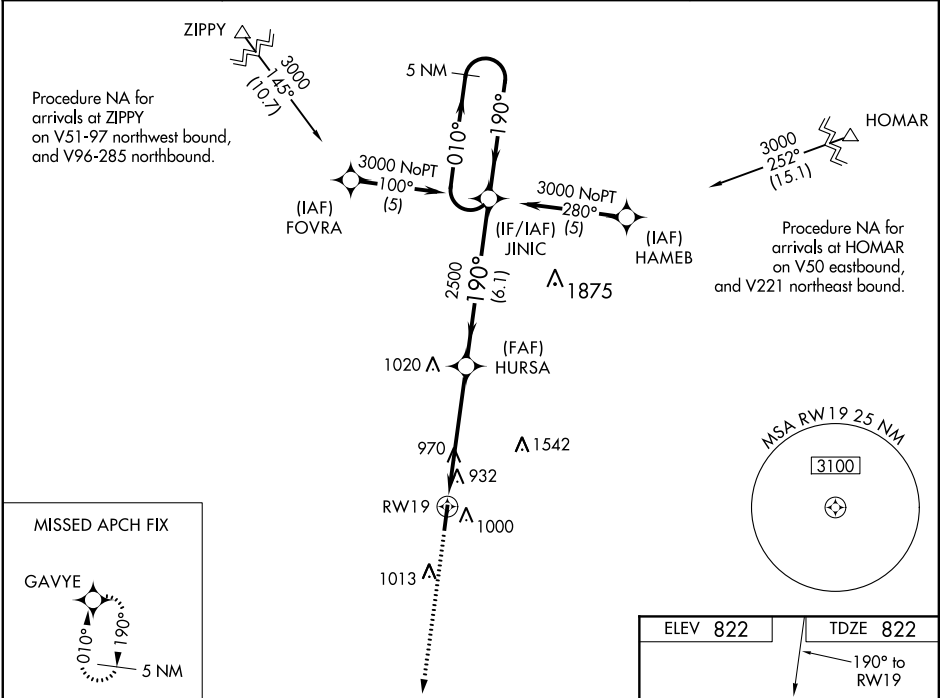


WAAS CH 53703 W19A	APP CRS 190°	Rwy Idg TDZE Apt Elev	5002 822 822
--	------------------------	-----------------------------	---

RNAV (GPS) RWY 19
INDY SOUTH GREENWOOD (HF'Y)

RNP APCH.	For uncompensated Baro-VNAV systems, LNAV/VNAV NA below -16°C or above 54°C. Baro-VNAV and VDP NA when using Indianapolis Intl altimeter setting. Rwy 19 helicopter visibility reduction below ¾ SM NA.	ODALS 	MISSED APPROACH: Climb to 3100 direct GAVYE and hold.
-----------	---	-----------	--

AWOS-3P 118.525	INDIANAPOLIS APP CON 124.95 317.8	GCO 121.725	UNICOM 123.0 (CTAF) 0
---------------------------	---	-----------------------	---------------------------------



EC-2, 03 DEC 2020 to 31 DEC 2020

EC-2, 03 DEC 2020 to 31 DEC 2020