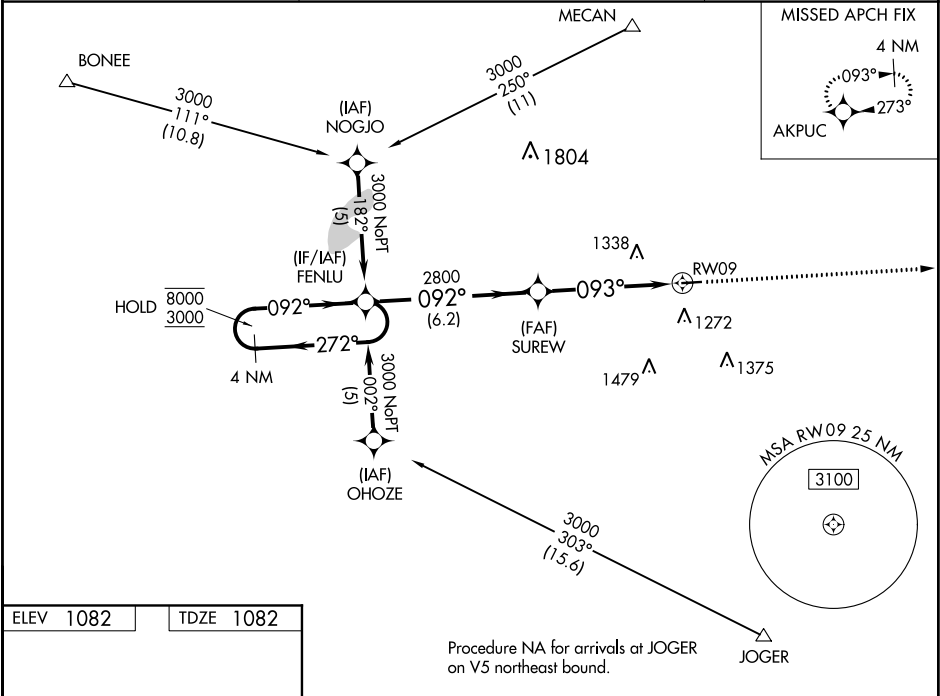


WAAS CH <b>53409</b> <b>W09A</b>	APP CRS <b>093°</b>	Rwy Idg TDZE Apt Elev	<b>4001</b> <b>1082</b> <b>1082</b>
--	------------------------	-----------------------------	---

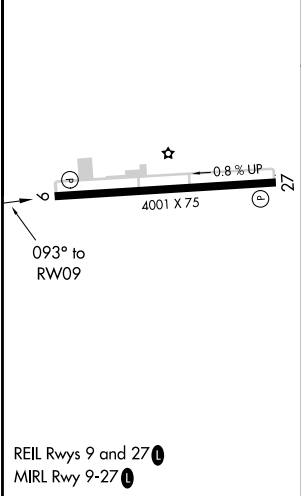
RNAV (GPS) RWY 9  
MADISON COUNTY (UYF)

RNP APCH. ▼ For uncompensated Baro-VNAV systems, LNAV/VNAV NA below -17°C or above 54°C.	MISSED APPROACH: Climb to 3000 direct AKPUC and hold.
--	---

AWOS-3PT <b>120.85</b>	COLUMBUS APP CON <b>118.85 269.275</b>	UNICOM <b>123.0 (CTAF) 0</b>
---------------------------	---	---------------------------------



ELEV 1082	TDZE 1082
-----------	-----------



4 NM Holding Pattern FENLU		VGSi and RNAV glidepath not coincident (VGSi Angle 3.00/TCH 29).		3000	AKPUC
8000 ← 272° 3000 → 092°		SUREW 2800		*UNAV only.	
GP 3.00° TCH 40		2800		*1.5 NM to RWY 9	
		6.2 NM		RWY 9	
		3.7 NM			
		1.5			
CATEGORY	A	B	C	D	
LPV DA		1332-1	250 (300-1)		
LNAV/VNAV DA		1548-1 3/4	466 (500-1 3/4)		
LNAV MDA	1580-1	498 (500-1)	1580-1 3/8 498 (500-1 3/8)	1580-1 1/2 498 (500-1 1/2)	
CIRCLING	1600-1 518 (600-1)	1640-1 558 (600-1)	1640-1 1/2 558 (600-1 1/2)	1640-2 558 (600-2)	