

WAAS CH 82426 W18A	APP CRS 182°	Rwy Idg 7000 TDZE 476 Apt Elev 476
--	------------------------	---

RNAV (GPS) RWY 18
CLARK RGNL (JYV)

RNP APCH.

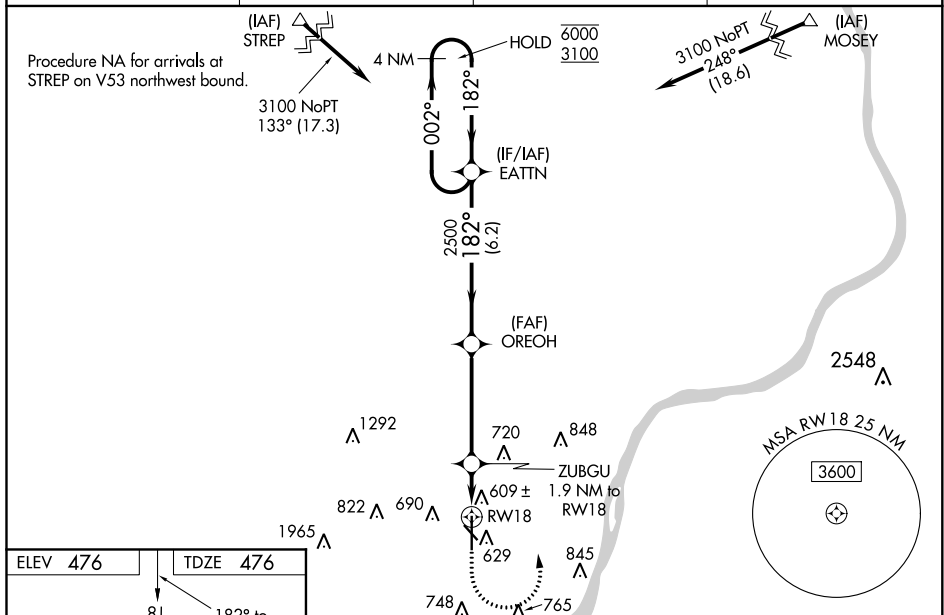
T Circling NA for Cat D southwest of Rwy 14 and 36. Circling Rwy 14, 32 NA at night.
A Baro-VNAV and VDP NA when using Louisville Muhammad Ali Intl altimeter setting.
 For uncompensated Baro-VNAV systems, LNAV/VNAV NA below -15°C or above 54°C.
 For inop ALS, increase LNAV/VNAV visibility to 1 SM. When local altimeter setting not received, use Louisville Muhammad Ali Intl altimeter setting: increase all DA 30 feet and LNAV/VNAV visibility 1/8 SM; increase all MDAs 40 feet, LNAV visibility Cats C and D 1/8 SM and Circling visibility Cat C 1/4 SM. For inop ALS when using Louisville Muhammad Ali Intl altimeter setting, increase LNAV/VNAV visibility to 1/8 SM.

MALSR



MISSED APPROACH:
Climb to 900 then
climbing left turn to
3100 direct EATTN
and hold.

AWOS-3 118.575	LOUISVILLE APP CON 132.075 327.0	CLNC DEL 118.05	UNICOM 122.7 (CTAF) ①
--------------------------	--	---------------------------	---------------------------------



900 ↑	3100 ↖	EATTN ✦	4 NM Holding Pattern			
*LNAV only						
CATEGORY	A		B		C	
LPV DA	676-½		200 (200-½)			
LNAV/ VNAV DA	850-⅝		374 (400-⅝)			
LNAV MDA	860-½ 384 (400-½)		860-⅝ 384 (400-⅝)			
C CIRCLING	1000-1 524 (600-1)	1040-1 564 (600-1)	1060-1½ 584 (600-1½)	1100-2 624 (700-2)		