

COLUMBUS, OHIO

AL-6846 (FAA)

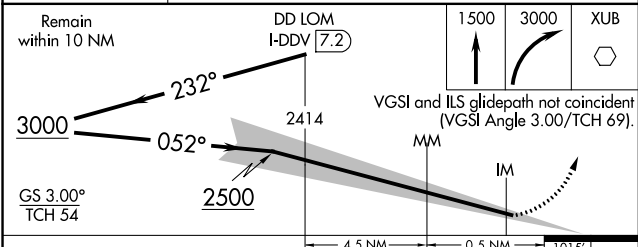
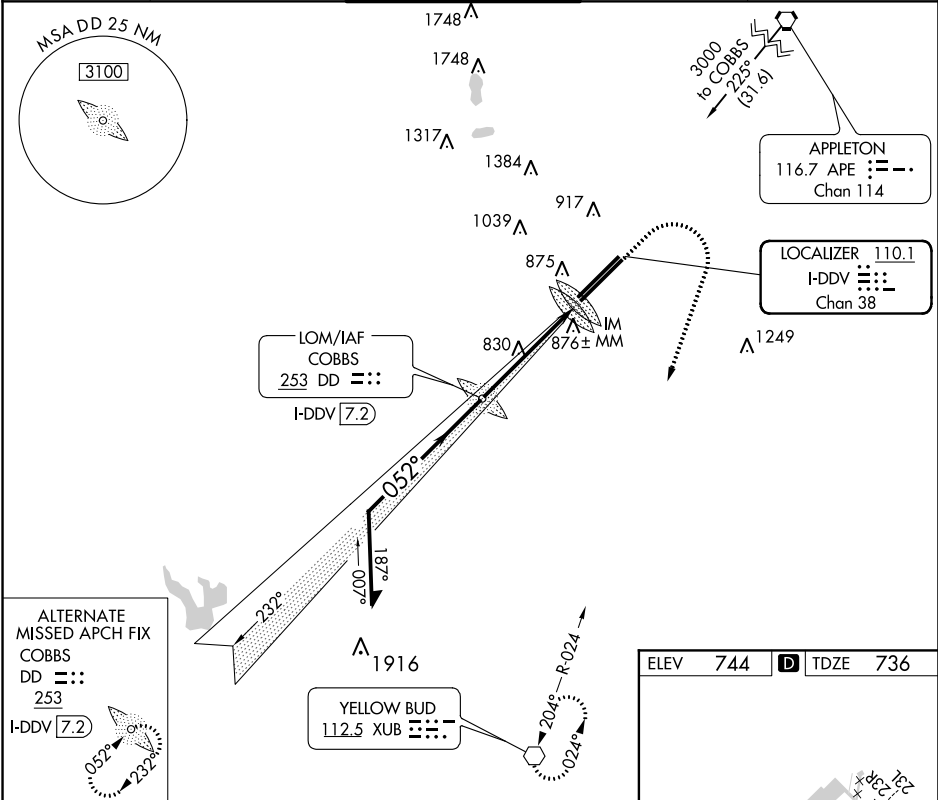
20086

| | | | |
|---------------|---------|----------|-------|
| LOC/DME I-DDV | APP CRS | Rwy Idg | 12102 |
| 110.1 | 052° | TDZE | 736 |
| Chan 38 | | Apt Elev | 744 |

ILS RWY 5R (CAT II)
RICKENBACKER INTL (LCK)

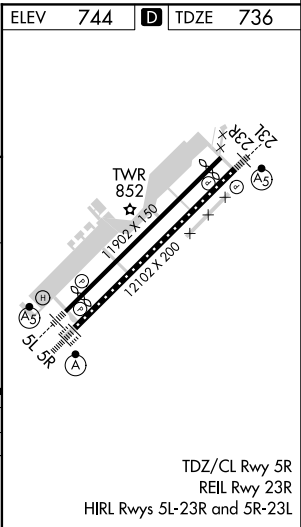
| | | | | |
|----------------------|--|---------|--|--|
| ADF or DME required. | | ALSIF-2 | MISSED APPROACH: Climb to 1500 then climbing right turn to 3000 direct XUB VOR and hold. | |
| | | | | |

| | | | | |
|--------|------------------|--------------|---------------|---------------|
| ATIS | COLUMBUS APP CON | RICK TOWER | GND CON | CLNC DEL |
| 132.75 | 134.0 279.6 | 120.05 348.4 | 125.275 275.8 | 125.275 275.8 |



| | | | | |
|----------|---|-----------|------------|---|
| CATEGORY | A | B | C | D |
| S-ILS 5R | | RA 100/12 | 100 DA 836 | |

CATEGORY II ILS - SPECIAL AIRCREW & AIRCRAFT CERTIFICATION REQUIRED



COLUMBUS, OHIO
Amdt 3C 05DEC19

39°49'N-82°56'W

RICKENBACKER INTL (LCK)
ILS RWY 5R (CAT II)

EC-2, 03 DEC 2020 to 31 DEC 2020

EC-2, 03 DEC 2020 to 31 DEC 2020