


LOC I-LCK	APP CRS	Rwy Idg	23L 12102	23R 10913
<u>110.1</u>	232°	TDZE	740	743
		Apt Elev	744	744

ILS or LOC RWY 23L
RICKENBACKER INTL (LCK)

<p>A Circling NA northwest of Rwy 5L-23R. When local altimeter setting not received, use John Glenn Columbus Intl altimeter setting and increase all DA 36 feet and all MDA 40 feet, increase S-LOC 23L visibility Cat C and D to RVR 5500.</p>	<p>MALSR</p> 	<p>MISSED APPROACH: Climb to 3000, then left turn direct XUB VOR and hold.</p>
--	--	--

ATIS 132.75	COLUMBUS APP CON 134.0 279.6	RICK TOWER 120.05 348.4	GND CON 125.275 275.8	CLNC DEL 125.275 275.8
----------------	---------------------------------	----------------------------	--------------------------	---------------------------

RADAR REQUIRED

ALTERNATE MISSED APCH FIX
 PICKL
 376 LC

MISSED APCH FIX
 YELLOW BUD
 XUB
 112.5

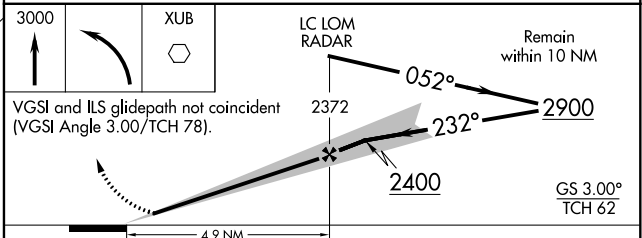
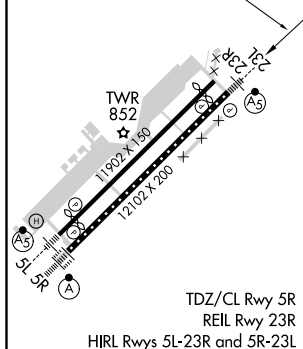
LOCALIZER 110.1
 H-LCK


LOM/IAF PICKL 376 LC
 RADAR

MSA LC 25 NM
 3100

ELEV 744	D	TDZE 23L 740
		TDZE 23R 743

232° 4.9 NM
from FAF



	CATEGORY		A		B		C		D	
	S-ILS 23L		940/24 200 (200-½)							
	S-LOC 23L		1220/24 480 (500-½)				1220/50 480 (500-1)			
	SIDESTEP RWY 23R		1220-1 477 (500-1)				1220-1½ 477 (500-½)		1220-2 477 (500-2)	
	CIRCLING		1220-1 476 (500-1)				1220-1½ 476 (500-½)		1300-2 556 (600-2)	
TDZ/CL Rwy 5R REIL Rwy 23R HIRL Rwy 5L-23R and 5R-23L FAF to MAP 4.9 NM										
Knots	60	90	120	150	180					
Min:Sec	4:54	3:16	2:27	1:58	1:38					