


WAAS CH 62811 W23A	APP CRS 230°	Rwy Idg 12102 TDZE 739 Apt Elev 744
--	------------------------	--

RNAV (GPS) RWY 23L
RICKENBACKER INTL (LCK)

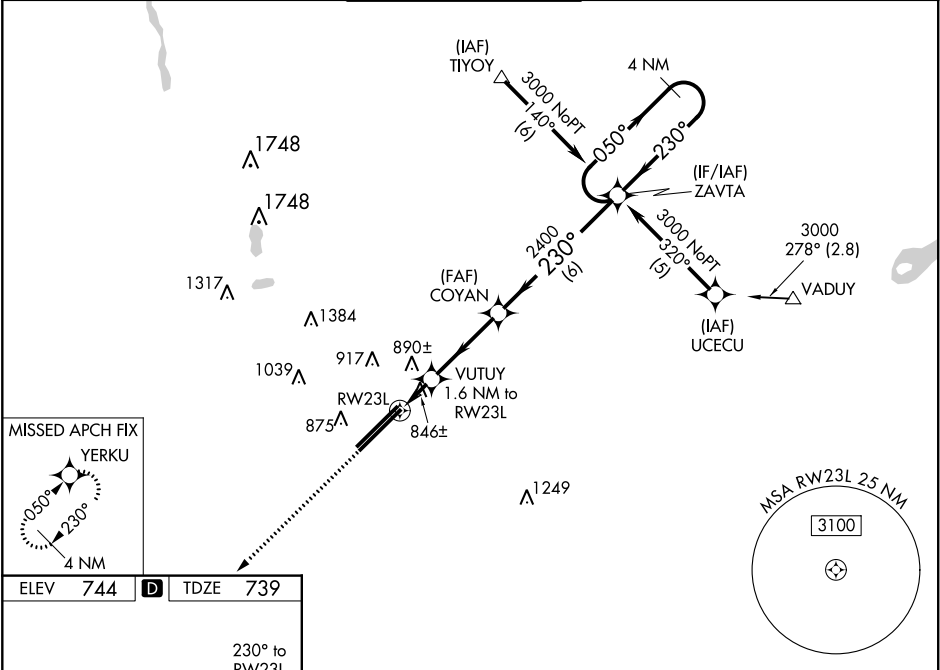
A Circling NA NW of Rwy 5L-23R. Baro-VNAV NA when using John Glenn Columbus Intl altimeter setting. For uncompensated Baro-VNAV systems, LNAV/VNAV NA below -16°C (4°F) or above 47°C (116°F). DME/DME RNP-0.3 NA. When local altimeter setting not received, use John Glenn Columbus Intl altimeter setting and increase all DA 36 feet and LNAV/VNAV all Cats visibility to RVR 5000, increase all MDA 40 feet. ** RVR 1800 authorized with use of FD or AP or HUD to DA, NA when using John Glenn Columbus Intl altimeter setting.

MALSR



MISSED APPROACH:
Climb to 3000 direct
YERKU and hold.

ATIS 132.75	COLUMBUS APP CON 134.0 279.6	RICK TOWER 120.05 348.4	GND CON 125.275 275.8	CLNC DEL 125.275 275.8
-----------------------	--	-----------------------------------	---------------------------------	----------------------------------



ELEV **744** **D** TDZE **739**

3000 YERKU VGSI and RNAV glidepath not coincident (VGSI Angle 3.00/TCH 78).

4 NM Holding Pattern

* LNAV only.

VUTUY 1.6 NM to RW23L

COYAN

RW23L

*1280

2400

GP 3.00° TCH 55

CATEGORY	A	B	C	D
LPV DA **	939/24		200 (200-½)	
LNAV/VNAV DA	1121/40		382 (400-¾)	
LNAV MDA	1180/24	441 (500-½)	1180/40	1180/50
			441 (500-¾)	441 (500-1)
CIRCLING	1180-1	1200-1	1200-1½	1300-2
	436 (500-1)	456 (500-1)	456 (500-1½)	556 (600-2)