

WAAS CH 78421 W23B	APP CRS 230°	Rwy Idg TDZE Apt Elev	10913 743 744
--	------------------------	-----------------------------	--

RNAV (GPS) RWY 23R

RICKENBACKER INTL (LCK)

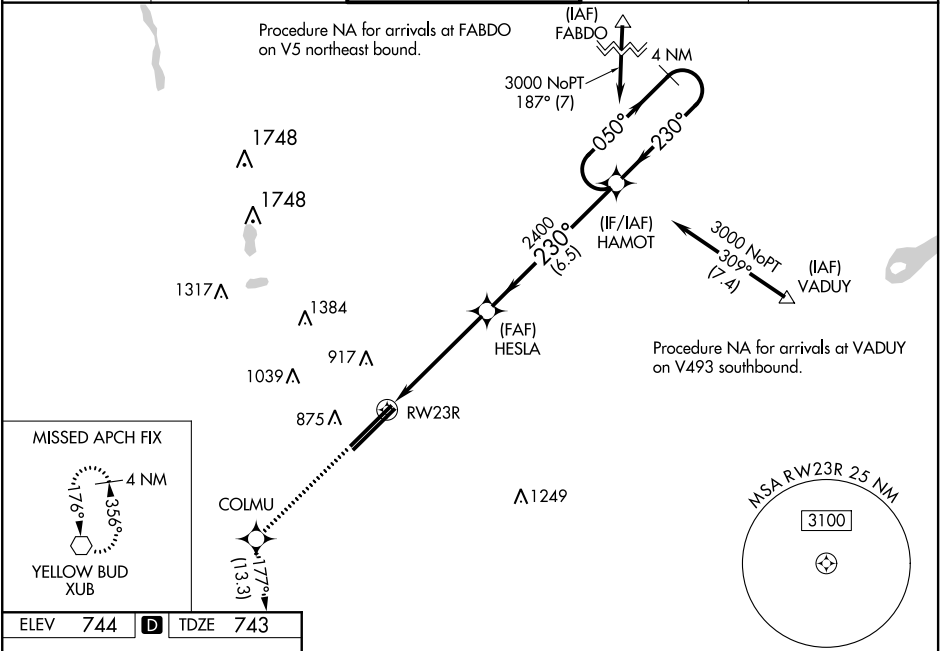
RNP APCH.

⚠

Baro-VNAV NA when using John Glenn Columbus Intl altimeter setting. For uncompensated Baro-VNAV systems, LNAV/VNAV NA below -16°C or above 54°C. Circling NA northwest of Rwy 5L-23R. VDP NA with John Glenn Columbus Intl altimeter setting. When local altimeter setting not received, use John Glenn Columbus Intl altimeter setting and increase all DA 36 feet and all MDA 40 feet. Increase LNAV/VNAV visibility 1⁄8 mile all Cats.

MISSED APPROACH:
Climb to 3000 direct COLMU and on track 177° to XUB VOR and hold.

ATIS 132.75	COLUMBUS APP CON 134.0 279.6	RICK TOWER 120.05 348.4	GND CON 125.275 275.8	CLNC DEL 125.275 275.8
-----------------------	--	-----------------------------------	---------------------------------	----------------------------------



3000 COLMU tr 177° XUB

VGSI and RNAV glidepath not coincident (VGSI Angle 3.00/TCH 79).

4 NM Holding Pattern

HAMOT

050° 230° 3000

GP 3.00° TCH 55

* LNAV only.

* 1.3 NM to RW23R

RW23R

HESLA 2400

2400

1.3 3.7 6.5

TDZ/CL Rwy 5R REIL Rwy 23R HIRL Rwy 5L-23R and 5R-23L

TWR 852 11902 X 150 12102 X 200

5L 5R

CATEGORY	A	B	C	D
LPV DA		943-3⁄4	200 (200-3⁄4)	
LNAV/VNAV DA		1006-7⁄8	263 (300-7⁄8)	
LNAV MDA	1220-1	477 (500-1)	1220-1³⁄8	477 (500-1³⁄8)
CIRCLING	1220-1	476 (500-1)	1220-1½	1300-2
			476 (500-1½)	556 (600-2)