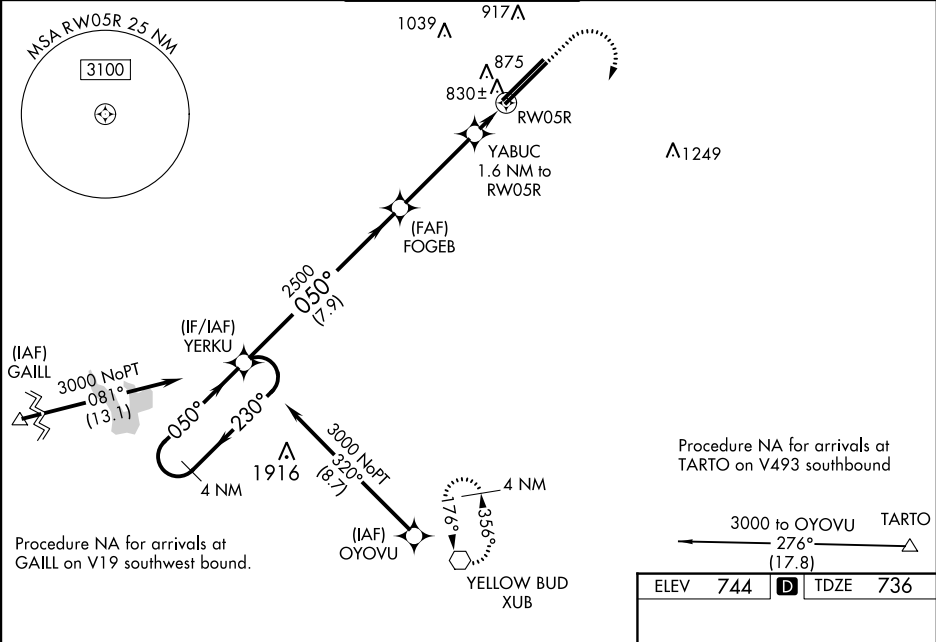


WAAS CH <b>78410</b> <b>W05A</b>	APP CRS <b>050°</b>	Rwy Idg <b>12102</b> TDZE <b>736</b> Apt Elev <b>744</b>
--	------------------------	--

RNAV (GPS) RWY 5R

RICKENBACKER INTL (LCK)

RNP APCH			ALSF-2		MISSED APPROACH: Climb to 1500 then climbing right turn to 3000 direct XUB VOR and hold.
<div>Baro-VNAV NA when using John Glenn Columbus Intl altimeter setting. For uncompensated Baro-VNAV systems, LNAV/VNAV NA below -16°C or above 54°C. Circling NA northwest of Rwy 5L-23R. VDP NA with John Glenn Columbus Intl altimeter setting. When local altimeter setting not received, use John Glenn Columbus Intl altimeter setting and increase all DA 36 feet, and all MDA 40 feet. Increase LNAV Cat C and D visibility to RVR 4000. For inop ALSF when using John Glenn Columbus Intl altimeter setting, increase LNAV/VNAV visibility to 1 mile all Cats.</div>					
ATIS <b>132.75</b>	COLUMBUS APP CON <b>134.0 279.6</b>	RICK TOWER <b>120.05 348.4</b>	GND CON <b>125.275 275.8</b>	CLNC DEL <b>125.275 275.8</b>	



VGSI and RNAV glidepath not coincident (VGSI Angle 3.00/TCH 65).				
4 NM Holding Pattern YERKU				
GP 3.00° TCH 54				
FOGBE				
YABUC 1.6 NM to RW05R				
*1 NM to RW05R				
*1220				
7.9 NM 3.8 NM 0.6 NM 1 NM				
CATEGORY	A	B	C	D
LPV DA	936/18		200 (200-½)	
LNAV/VNAV DA	1103/35		367 (400-¾)	
LNAV MDA	1120/24	384 (400-½)	1120/35	384 (400-¾)
CIRCLING	1180-1 436 (500-1)	1200-1 456 (500-1)	1200-1½ 456 (500-1½)	1300-2 556 (600-2)

