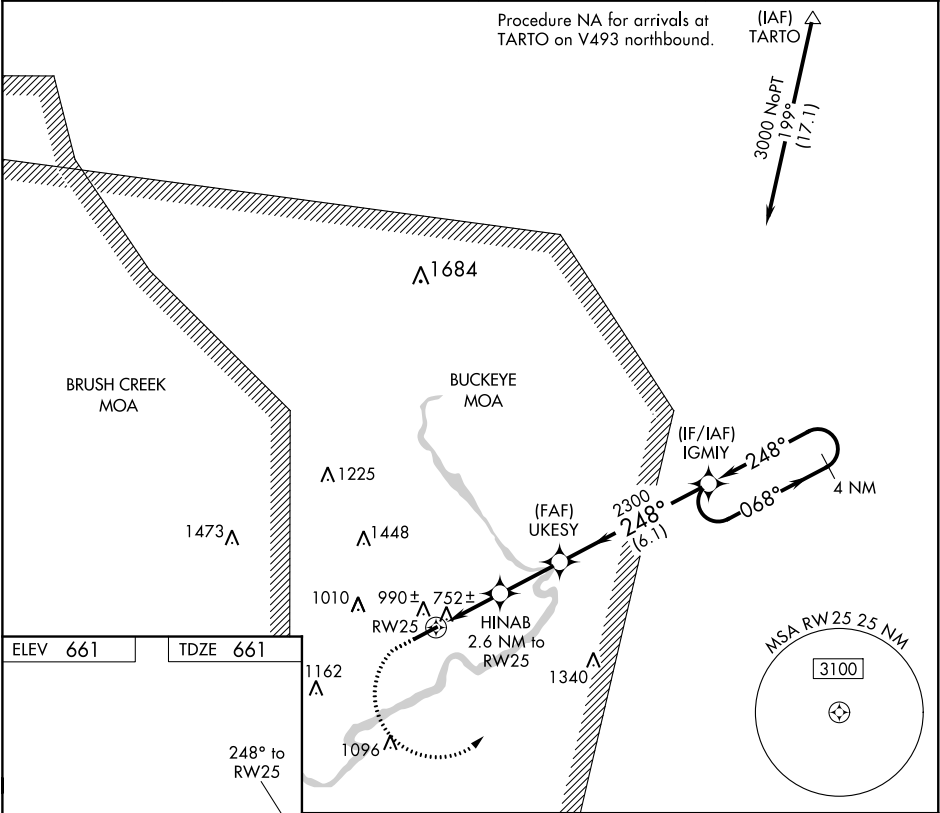


WAAS CH 97537 W25A	APP CRS 248°	Rwy Idg TDZE 661 Apt Elev 661	4899
--	------------------------	---	-------------

RNAV (GPS) RWY 25
PIKE COUNTY (EOP)

RNP APCH.		MISSED APPROACH: Climb to 1100 then climbing left turn to 3000 direct IGMYY and hold.	
▼ NA			
AWOS-A 118.4	PMH AWOS-3 125.175	INDIANAPOLIS CENTER 135.575 290.5	UNICOM 123.0 (CTAF) 0



1100

3000

IGMIY

↑

↻

✧

VGSI and descent angles not coincident
(VGSI Angle 3.00/TCH 25).

IGMIY

4 NM Holding Pattern

UKESY

248°

068°

3000

HINAB

2.6 NM to RW25

2300

248°

1520

3.00°

TCH 40

2.6 NM

2.4 NM

6.1 NM

RW25

248°

CATEGORY	A		B		C		D	
LP MDA			1020-1		359 (400-1)			
LNAV MDA	1240-1		579 (600-1)		1240-1½ 579 (600-1½)			
CIRCLING	1440-1 779 (800-1)		1460-1 799 (800-1)		1520-2½ 859 (900-2½)		1640-3 979 (1000-3)	

REIL Rwy 7 and 25

MIRL Rwy 7-25