

WAAS CH 42628 W07A	APP CRS 074°	Rwy Idg TDZE Apt Elev	5000 1112 1122
----------------------------------------	------------------------	-----------------------------	-------------------------------------------

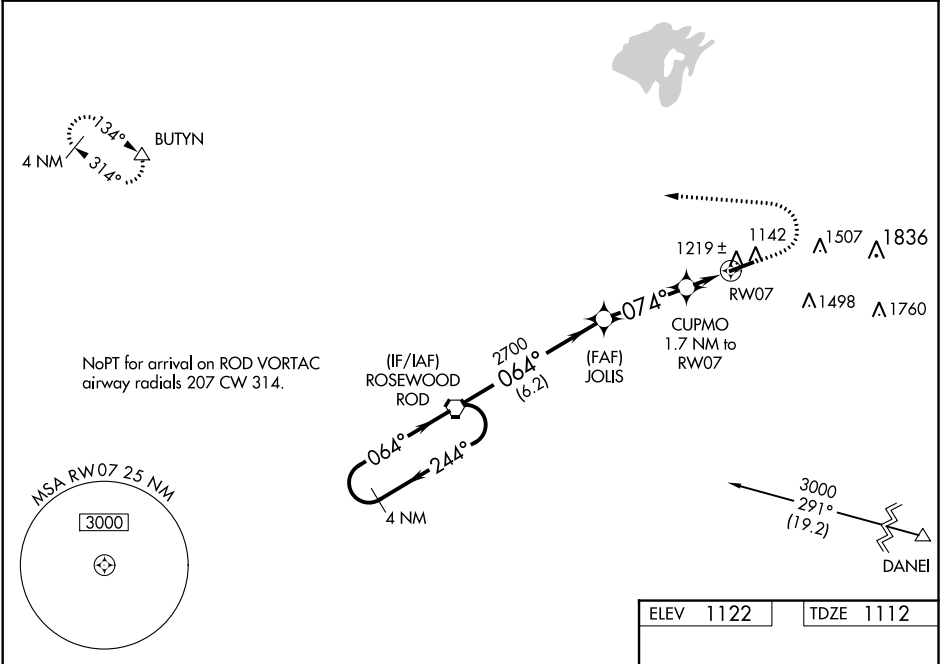
RNAV (GPS) RWY 7
BELLEFONTAINE RGNL (EDJ)

NA

For uncompensated Baro-VNAV systems, LNAV/VNAV NA below -17°C (2°F) or above 37°C (98°F). DME/DME RNP-0.3 NA. VDP and Baro-VNAV NA with James M. Cox Dayton Intl altimeter setting. When local altimeter setting not received, use James M. Cox Dayton Intl altimeter setting and increase all DA 94 feet and all MDA 100 feet and increase LPV and LNAV/VNAV all Cts visibility ¼ mile, LNAV Cts C and D visibility ⅜ mile, and Circling Cts C and D visibility ¼ mile.

MISSED APPROACH:
Climb to 1600 then climbing left turn to 3000 direct BUTYN and hold.

AWOS-3 118.075	COLUMBUS APP CON 118.425 294.5	UNICOM 122.8 (CTAF) 0
--------------------------	------------------------------------------	---------------------------------



4 NM Holding Pattern		ROD VORTAC	JOLIS	1600	3000	BUTYN
3000 ← 244°		064° →	064°	2700	CUPMO 1.7 NM to RW07	* LNAV only.
GP 3.00° TCH 41		2700	* 074°	* 1.1 NM to RW07	RW07	
		6.2 NM	3.2 NM	0.7 NM	1.1 NM	
CATEGORY	A	B	C	D		
LPV DA	1362-7/8		250 (300-7/8)			
LNAV/VNAV DA	1504-1 3/8		392 (400-1 3/8)			
LNAV MDA	1480-1		368 (400-1)			
CIRCLING	1620-1 498 (500-1)	1640-1 518 (600-1)	1640-1 1/2 518 (600-1 1/2)	1720-2 598 (600-2)		

ELEV 1122 TDZE 1112

MIRL Rwy 7-25 0
REIL Rwy 7 and 25 0

EC-2, 03 DEC 2020 to 31 DEC 2020

EC-2, 03 DEC 2020 to 31 DEC 2020