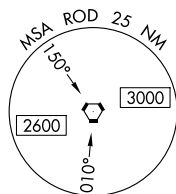
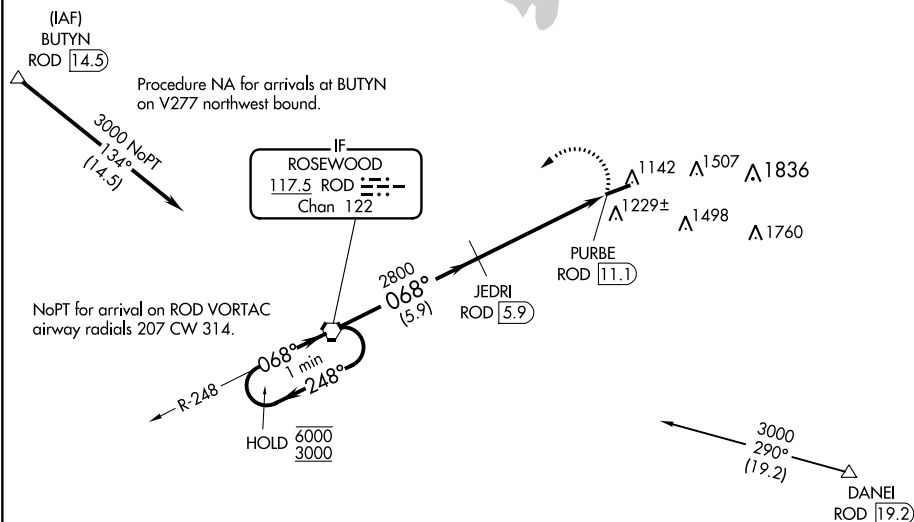
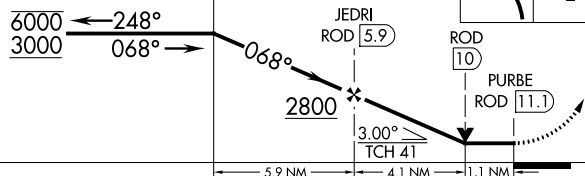


VOR RWY 7  
BELLEFONTAINE RGNL (E.D.J.)

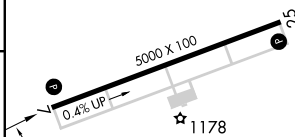
**MISSED APPROACH:** Climbing left turn to 3000 direct ROD VORTAC and hold.

UNICOM  
122.8 (CTAF) **L**

ROD  
VORTAC



ELEV	1122		TDZE	1112
------	------	--	------	------



068° 5.2 NM  
from FAF

MIRL Rwy 7-25 **L**  
REIL Rwys 7 and 25 **L**