

LOC I-JDU	APP CRS	Rwy ldg	10000
111.15	319°	TDZE	442
		Apt Elev	459

ILS or LOC RWY 32R

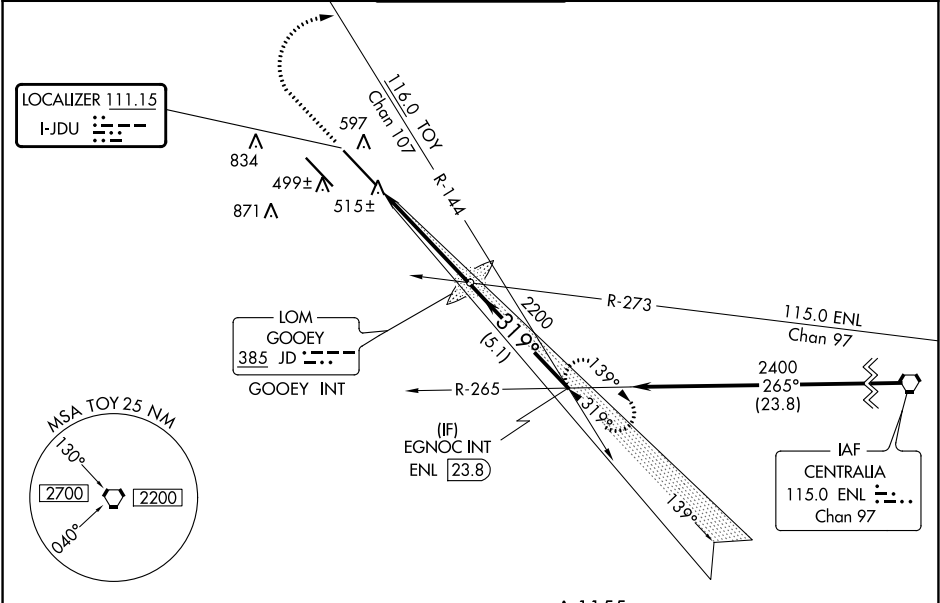
SCOTT AFB/MIDAMERICA (BLV)

⚠ When local altimeter setting not received, use St Louis Downtown altimeter setting; increase DA to 684 feet and all MDA 60 feet; increase S-LOC 32R Cat C/D/E visibility to RVR 3500 and increase Circling Cat C/D/E visibility ¼ mile. For inop MALS, increase S-ILS 32R Cat E visibility to RVR 4000 and increase S-LOC 32R Cat E visibility to RVR 5000. For inop MALS when using St Louis Downtown altimeter setting, increase S-ILS 32R Cat E visibility to RVR 4000 and increase S-LOC 32R Cat E visibility to RVR 6000. ** RVR 1800 authorized with use of FD or AP or HUD to DA (NA when using St Louis Downtown altimeter setting).

MALS

MISSED APPROACH:
Climb to 1500 then
climbing right turn to
2400 on heading 194°
and TOY VORTAC
R-144 to EGNOC INT
and hold.

D-ATIS ★	ST LOUIS APP CON	SCOTT TOWER	GND CON	CLNC DEL
128.7 256.7	125.2 281.5	128.25 253.5	119.2 275.8	119.875 225.4 263.025



ELEV 459	TDZE 442
----------	----------

REIL Rwy 14L
HIRL Rwy 14R-32L and 14L-32R
FAF to MAP 4.9 NM

Knots	60	90	120	150	180
Min:Sec	4:54	3:16	2:27	1:58	1:38

1500	2400	TOY R-144	EGNOC INT	VGSI and ILS glidepath not coincident (VGSI Angle 3.00/TCH 71).	EGNOC INT
↑	hdg 194°				
GS 3.00° TCH 55					
CATEGORY	A	B	C	D	E
S-ILS 32R **	642/24 200 (200-½)				
S-LOC 32R	780/24	338 (400-½)	780/26	338 (400-½)	
CIRCLING	1000-1 541 (600-1)	1080-1 621 (700-1)	1240-2¼ 781 (800-2¼)	1240-2½ 781 (800-2½)	1240-2¾ 781 (800-2¾)