

APP CRS  
**228°**

Rwy Idg  
**5810**

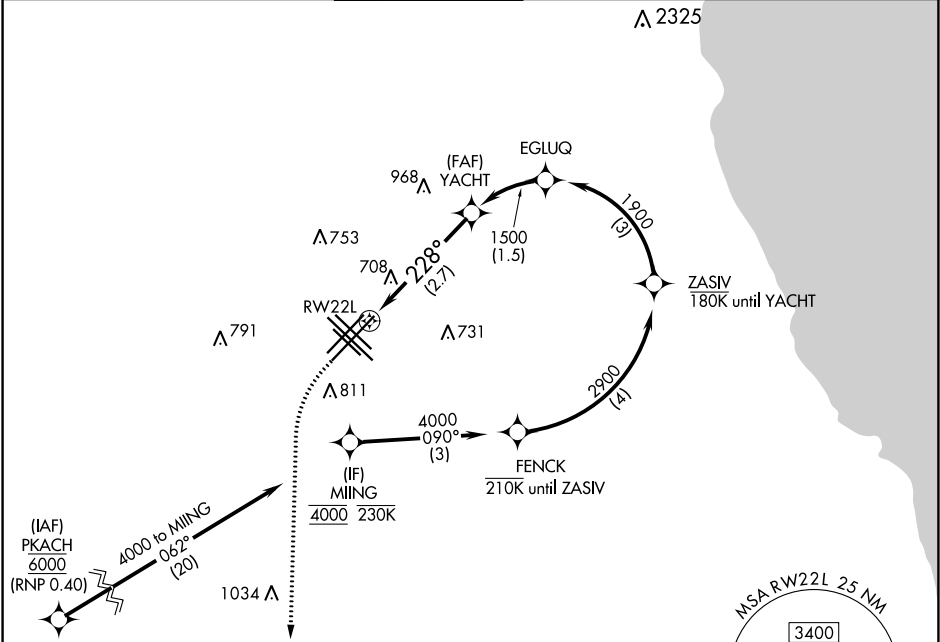
TDZE  
**611**

Apt Elev  
**620**

**RNAV (RNP) X RWY 22L**

CHICAGO MIDWAY INTL (MDW)

RF required. RNP AR APCH.			MISSED APPROACH: Climb to 1300 then climbing left turn to 2600 direct EON VORTAC and hold.		
▼ For uncompensated Baro-VNAV systems, procedure NA below -20°C or above 54°C.					
D-ATIS 132.75	CHICAGO APP CON 128.2 353.875	MIDWAY TOWER 135.2 269.125	GND CON 121.65	CLNC DEL 124.625	CPDLC



ELEV 620 TDZE 611

MISSED APCH FIX

VGS and RNAV glidepath not coincident (VGSi Angle 3.00/TCH 43).

CATEGORY	A	B	C	D
RNP 0.18 DA	951/50	340 (400-1)		
RNP 0.30 DA	1001/60	390 (400-1¼)		

**AUTHORIZATION REQUIRED**