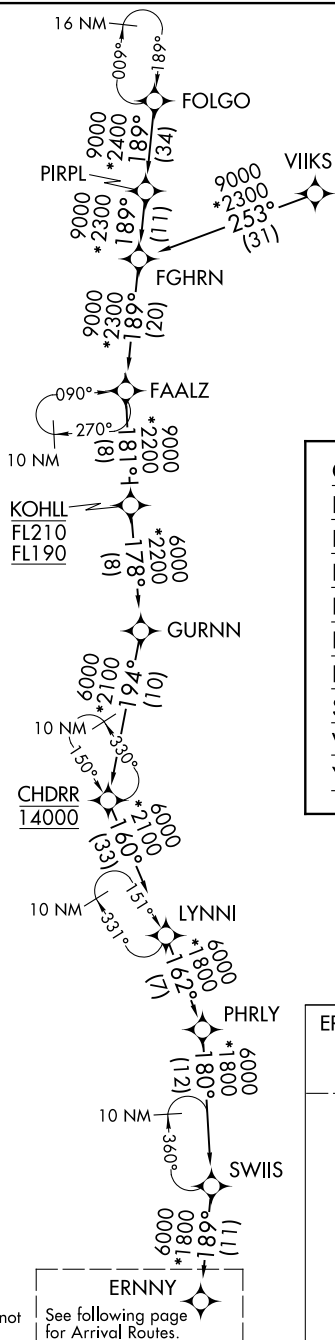


## ERNNY SEVEN ARRIVAL (RNAV) Transition Routes

CHICAGO, ILLINOIS



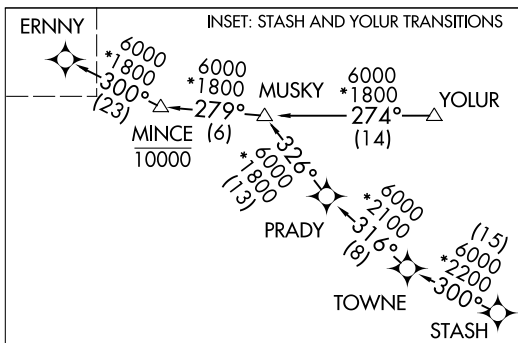
NOTE: RADAR required.  
NOTE: RNAV 1.  
NOTE: DME/DME/IRU or GPS required.  
NOTE: YOLUR transition - ATC assigned only.  
NOTE: STASH transition - ATC assigned only.  
NOTE: LYNNI transition: For Milwaukee terminal area departures only.  
NOTE: VIKHS transition: ATC assigned only.

CHDRR TRANSITION (CHDRR.ERNNY7):  
 FAALZ TRANSITION (FAALZ.ERNNY7):  
 FGHRN TRANSITION (FGHRN.ERNNY7):  
 FOLGO TRANSITION (FOLGO.ERNNY7):  
 KOHLL TRANSITION (KOHLL.ERNNY7):  
 LYNNI TRANSITION (LYNNI.ERNNY7):  
 PIRPL TRANSITION (PIRPL.ERNNY7):  
 STASH TRANSITION (STASH.ERNNY7):  
 VIIKS TRANSITION (VIIKS.ERNNY7):  
 YOLUR TRANSITION (YOLUR.ERNNY7):

(CONTINUED ON FOLLOWING PAGE)

NOTE: Chart not to scale.

See following page  
for Arrival Routes.



## ERNNY SEVEN ARRIVAL (RNAV) Transition Routes

CH|CAGO, |LL|NO|S

(ERNNY.ERNNY7) 05NOV20

CHICAGO O'HARE INTL (ORD)