

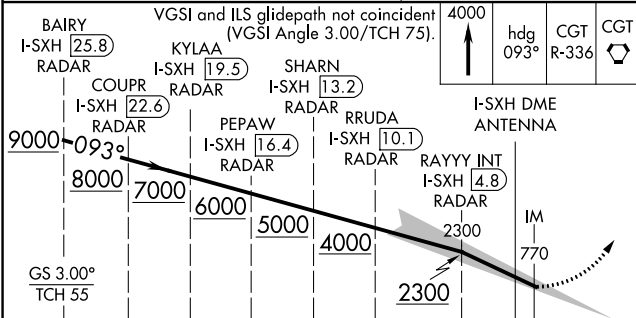
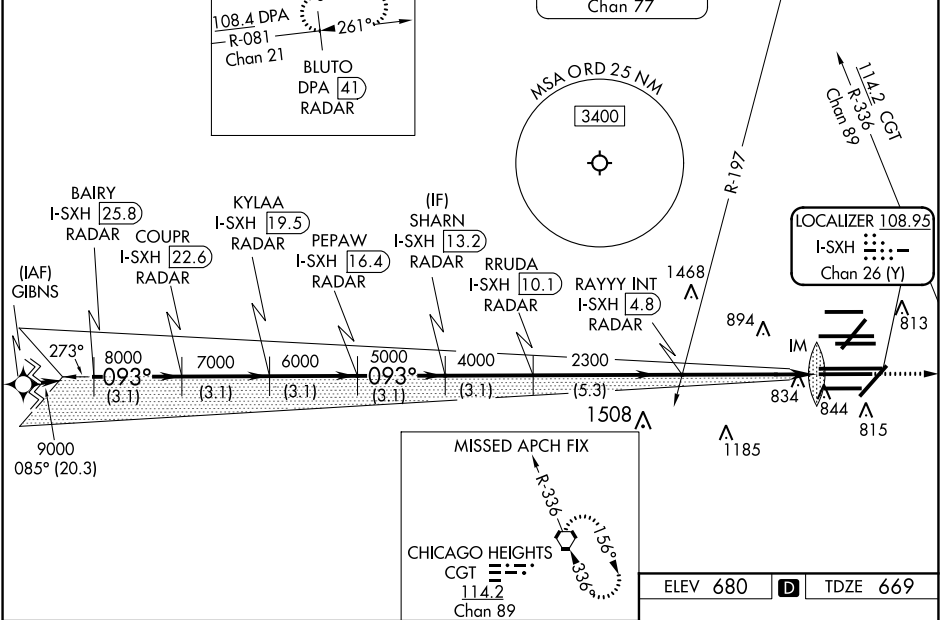
LOC/DME I-SXH	APP CRS	Rwy Idg
<b>108.95</b>	<b>093°</b>	<b>10540</b>
Chan 26(Y)		TDZE <b>669</b>
		Apt Elev <b>680</b>

ILS RWY 10C (CAT II & III)  
CHICAGO O'HARE INTL (ORD)

From GIBNS: RNAV-1 GPS required.	ALSF-2	MISSED APPROACH: Climb to 4000 on heading 093° and CGT VORTAC R-336 to CGT VORTAC and hold.
RNAV 1-GPS or RADAR required for procedure entry. DME or RADAR required.	(A)	
Simultaneous approach authorized. CAT II: RVR 1000 authorized with specific OPSPEC, MSPEC, or LOA approval and use of autoland or HUD to touchdown.		

CHICAGO APP CON	O'HARE TOWERS	GND CON	(TWR CENTER)	CLNC DEL
<b>119.0 292.125</b>	<b>128.15 348.0</b> (Rwy 9L/27R) <b>133.0 348.0</b> (10R/28L) <b>120.75 121.15 126.9 132.7 348.0</b> (CENTER)	<b>124.125</b> (TWR NORTH) <b>118.05</b> (TWR SOUTH) <b>226.675</b> (ALL TWRs)	<b>121.75</b> (OBND) <b>121.9</b> (IBND)	<b>121.6</b>

D-ATIS <b>135.4 282.225</b>	ALTERNATE MISSED APCH FIX	NORTHBROOK <b>113.0</b> OBK (ALL TWRs) Chan 77	CPDLC
-----------------------------	---------------------------	--	-------



CATEGORY	A	B	C	D
S-ILS 10C	CAT II RA 102/12 100 DA 769			
S-ILS 10C	CAT III RVR 06			

**CATEGORY II and III ILS - SPECIAL AIRCREW & AIRCRAFT CERTIFICATION REQUIRED**

