

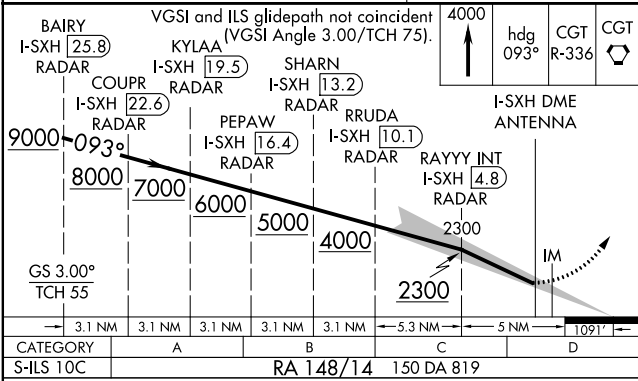
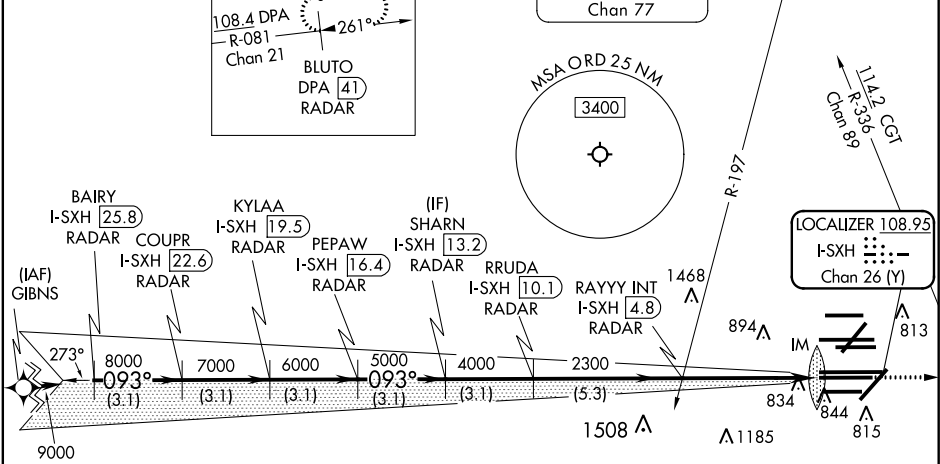
LOC/DME I-SXH	APP CRS	Rwy Idg	10540
108.95	093°	TDZE	669
Chan 26(Y)		Apt Elev	680

ILS RWY 10C (SA CAT I)
CHICAGO O'HARE INTL (ORD)

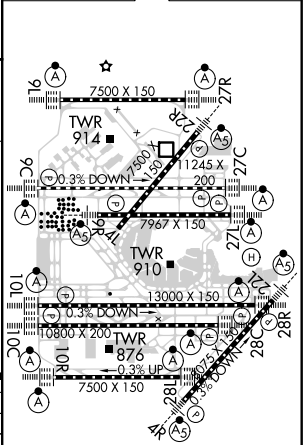
From GIBNS: RNAV-1 GPS required.	ALSIF-2	MISSED APPROACH: Climb to 4000 on heading 093° and CGT VORTAC R-336 to CGT VORTAC and hold.
RNAV 1-GPS or RADAR required for procedure entry. DME or RADAR required.		
Simultaneous approach authorized. Requires specific OPSPEC, MSPEC, or LOA approval and use of HUD to DH.		

CHICAGO APP CON	O'HARE TOWERS	GND CON	(TWR CENTER)	CLNC DEL
119.0 292.125	128.15 348.0 (Rwy 9L/27R) 133.0 348.0 (10R/28L) 120.75 121.15 126.9 132.7 348.0 (CENTER)	124.125 (TWR NORTH) 118.05 (TWR SOUTH) 226.675 (ALL TWRs)	121.75 (OBND) 121.9 (IBND)	121.6

D-ATIS 135.4 282.225	ALTERNATE MISSED APCH FIX	NORTHBROOK 113.0 OBK Chan 77	CPDLC
----------------------	---------------------------	------------------------------	-------



ELEV 680	TDZE 669
----------	----------



SA CATEGORY I ILS - SPECIAL AIRCREW & AIRCRAFT CERTIFICATION REQUIRED

HIRL all Rwys
TDZ/CL all Rwys except 4L