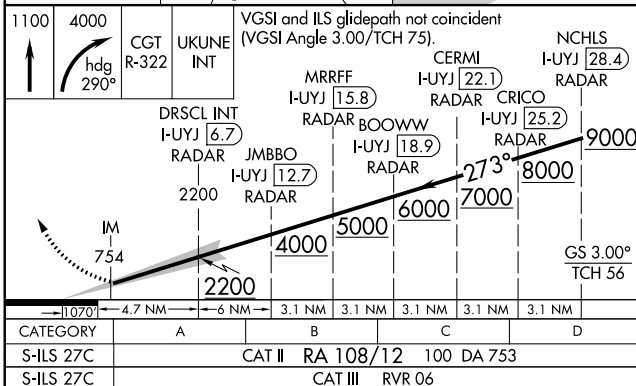
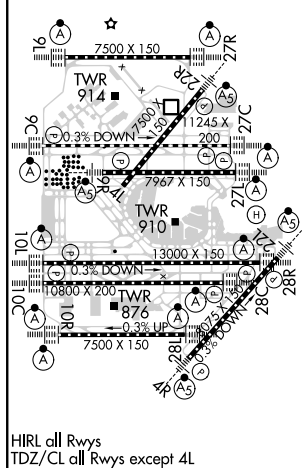
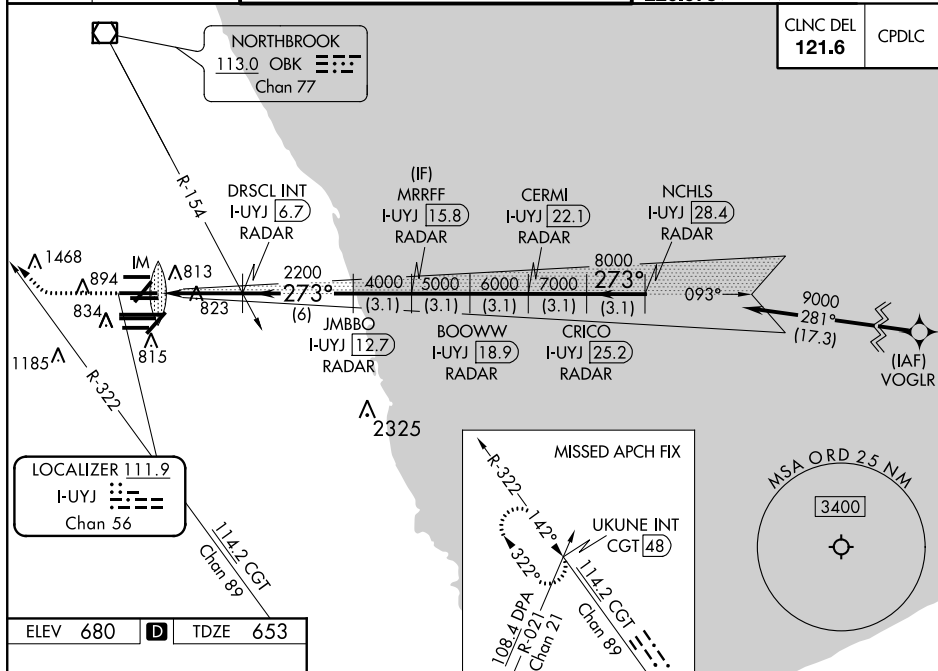


ILS RWY 27C (CAT II & III)
CHICAGO O'HARE INTL (ORD)

ALSF-2 MISSED APPROACH: Climb to 1100 then climbing right turn to 4000 on heading 290° and CGT R-322 to UKUNE INT/CGT 48 DME and hold.

ALSF-2

D-ATIS 135.4 282.225	CHICAGO APP CON 119.0 292.125	O'HARE TOWERS 128.15 348.0 (Rwy 1L/27R) 133.0 348.0 (10R/28L) 120.75 121.15 126.9 132.7 348.0 (CENTER)				GND CON 124.125 (TWR NORTH) 118.05 (TWR SOUTH) 226.675 (ALL TWSR)	(TWR CENTER) 121.75 (IBND) 121.9 (IBND)
--	---	---	--	--	--	---	---



CATEGORY II & III ILS - SPECIAL AIRCREW
& AIRCRAFT CERTIFICATION REQUIRED