

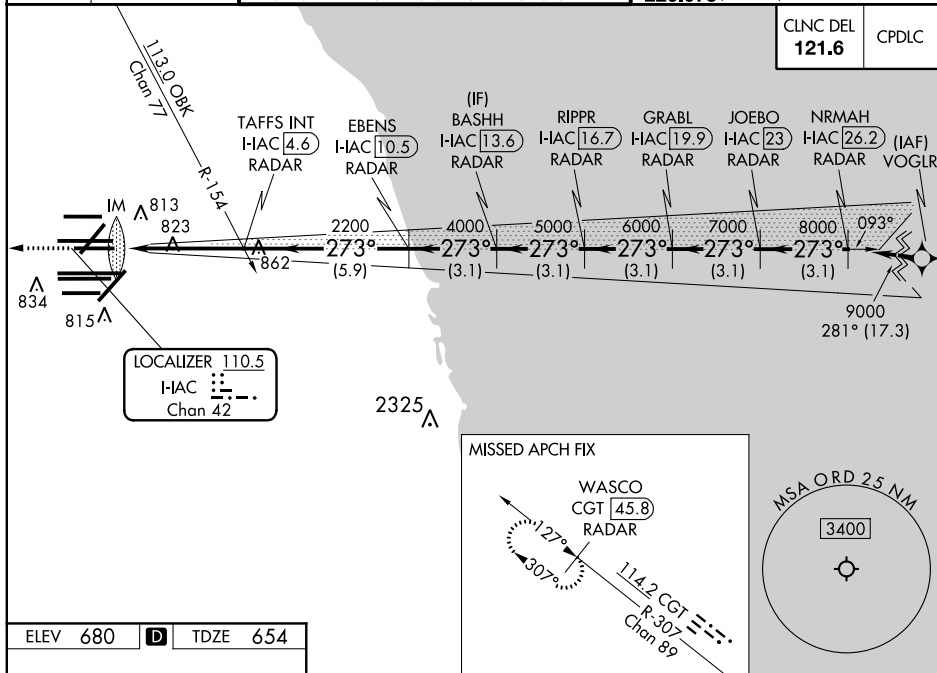
ILS RWY 27L (CAT II & III)
CHICAGO O'HARE INTL (ORD)

ALSF-2

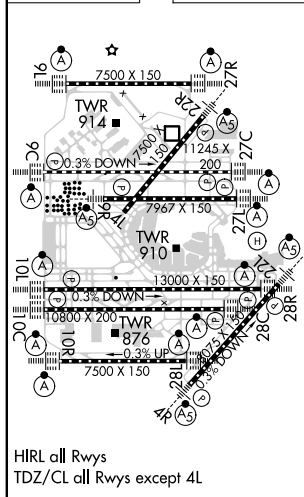
MISSED APPROACH: Climb to 1200 then climb to 4000 on heading 265° and on CGT VORTAC R-307 to WASCO/CGT 45.8 DME/RADAR and hold.

T Simultaneous approach authorized.

D-ATIS 135.4	CHICAGO APP CON	O'HARE TOWERS				GND CON		(TWR CENTER)
282.225	119.0	128.15	348.0 (Rwy 9L/27R)	133.0	348.0 (10R/28L)	124.125	(TWR NORTH)	121.75 (GBND)
	128.15	120.75	121.15	126.9	132.7	118.05	(TWR SOUTH)	121.9 (IBND)
	128.15	120.75	121.15	126.9	132.7	226.675	(ALL TWSR)	



ELEV 680	D	TDZE 654
----------	----------	----------

[illegible]

CATEGORY II & III ILS - SPECIAL AIRCREW & AIRCRAFT CERTIFICATION REQUIRED