

LOC/DME	I-AIC	APP CRS	Rwy ldg	7782
110.5		273°	TDZE	654
Chan 42			Apt Elev	680

ILS RWY 27L (SA CAT I)

CHICAGO O'HARE INTL (ORD)

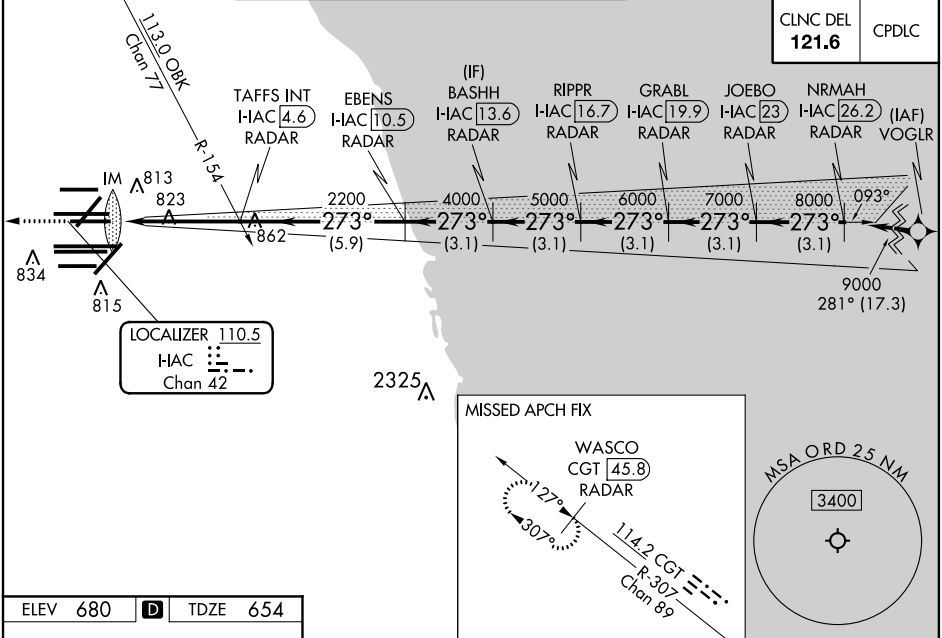
From VOGLR: RNAV 1-GPS required. Aircraft not GPS equipped - RADAR required for procedure entry. DME or RADAR required.

Simultaneous approach authorized. Requires specific OPSPEC, MSPEC, or LOA approval and use of HUD to DH. For inop ALS, increase S-LOC 27L Cat C/D visibility to 1½ SM.

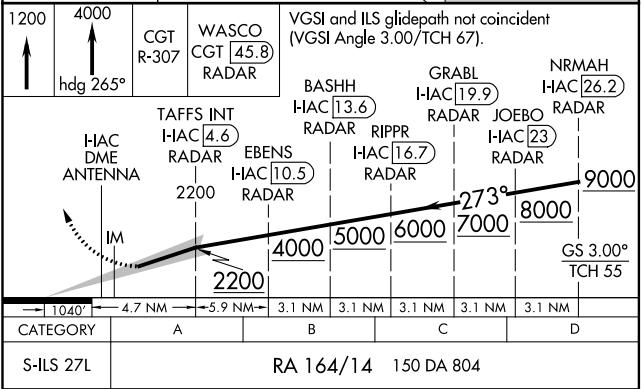
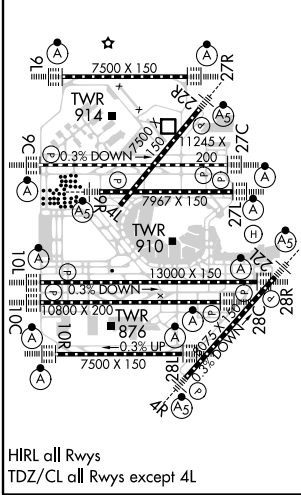
ALSF-2

MISSED APPROACH: Climb to 1200 then climb to 4000 on heading 265° and on CGT VORTAC R-307 to WASCO/CGT 45.8 DME/RADAR and hold.

D-ATIS	CHICAGO APP CON	O'HARE TOWERS	GND CON
135.4		128.15 348.0 (Rwy 9L/27R) 133.0 348.0 (10R/28L)	(TWR CENTER) 121.75 (ORND)
282.225	119.0 292.125	120.75 121.15 126.9 132.7 348.0 (CENTER)	(TWR SOUTH) 121.9 (IBND)
			226.675 (ALL TWS)



ELEV 680	D	TDZE 654
----------	---	----------



SA CATEGORY I ILS - SPECIAL AIRCREW
& AIRCRAFT CERTIFICATION REQUIRED

EC-3, 03 DEC 2020 to 31 DEC 2020

EC-3, 03 DEC 2020 to 31 DEC 2020