

**ILS RWY 28C (SA CAT I)**  
CHICAGO O'HARE INTL (ORD)

**MISSED APPROACH:** Climb to 1100 then climbing left turn to 4000 on heading 215° and DPA VOR/DME R-082 to DPA VOR/DME and hold.




113.0 Obk  
Chan 77

SEIKA INT  
I-VZE [7]  
RADAR

HAZIL  
I-VZE [12.7]  
RADAR

(IF)  
RZUKO  
I-VZE [15.8]  
RADAR

MEMAW  
I-VZE [19]  
RADAR

KOENN  
I-VZE [22.1]  
RADAR

SNTOE  
I-VZE [25.3]  
RADAR

LNDUH  
I-VZE [28.4]  
RADAR

(IAF)  
VOGLR

834

813

771

2300

4000

5000

6000

7000

8000

9000

273°

273°

093°

277° (17.2)

108.4 DPA  
R-082  
Chan 21

LOCALIZER 108.95  
I-VZE [7]  
Chan 26 (Y)

2325

MSA ORD 25 NM

3400

MISSED APCH FIX

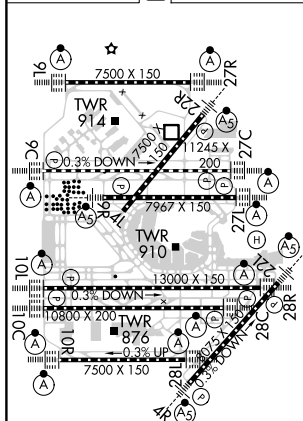
DUPAGE  
DPA [7]  
108.4  
Chan 21

R-248-068°

248°

ELEV	680	TDZE	651
------	-----	------	-----

CLNC DEL	121.6	CPDLC	121.6
----------	-------	-------	-------



1 100 ↑ hdg 215°	DPA R-082	DPA ☐	VGSI and ILS glidepath not coincident (VGSI Angle 3.00/TCH 80).			
CATEGORY	A		B	C		D
S-ILS 28C	RA 155/14		150 DA 801			

SA CATEGORY I ILS - SPECIAL AIRCREW  
& AIRCRAFT CERTIFICATION REQUIRED