

LOC/DME I-TSL

111.1

Chan 48

APP CRS

273°

Rwy ldg

13000

TDZE

651

Apt Elev

680

ILS RWY 28R (SA CAT I)

CHICAGO O'HARE INTL (ORD)

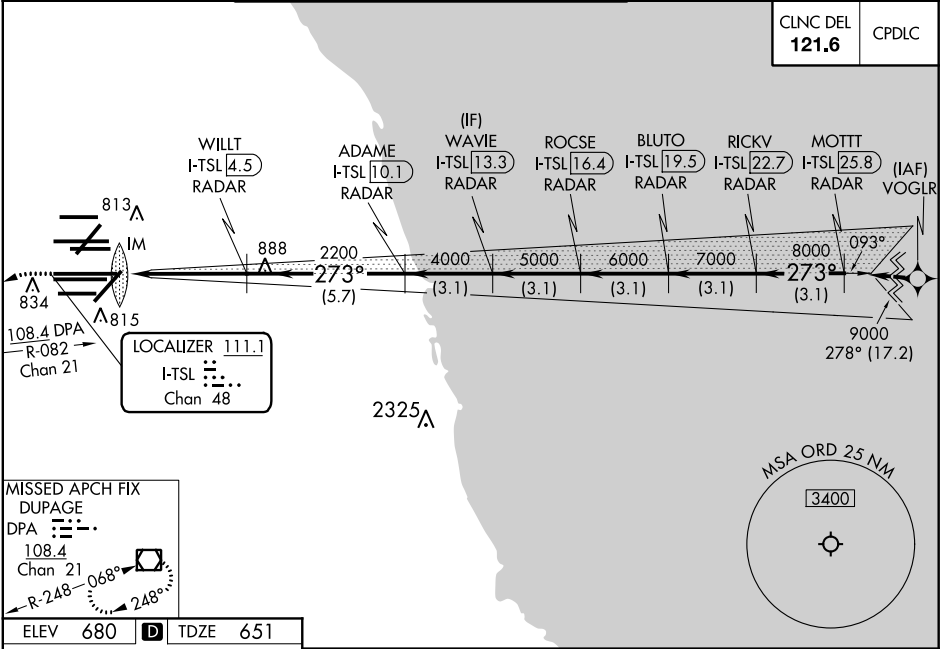
From VOGLR: RNAV 1-GPS required.
Aircraft not GPS equipped - RADAR required for procedure entry.
DME or RADAR required.

Simultaneous approach authorized. Requires specific OPSPEC, MSPEC, or LOA approval and use of HUD to DH.

ALS-F-2

MISSED APPROACH: Climb to 1100 then climbing left turn to 4000 on heading 215° and DPA
VOR/DME R-082 to DPA VOR/DME and hold.

D-ATIS	CHICAGO APP CON	O'HARE TOWERS	GND CON	(TWR CENTER)
135.4		128.15 348.0 (Rwy 9L/27R)	124.125 (TWR NORTH)	121.75 (OBND)
282.225	119.0 292.125	133.0 348.0 (10R/28L)	118.05 (TWR SOUTH)	121.9 (IBND)
		120.75 121.15 126.9 132.7 348.0 (CENTER)	226.675 (ALL TWRS)	



ELEV 680

TDZE 651

1100

4000

DPA

VGSI and ILS glidepath not coincident (VGSI Angle 3.00/TCH 70).

hdg 215°

R-082

WAVE I-TSL 13.3

BLUTO I-TSL 19.5

MOTTT I-TSL 25.8

ROCSE I-TSL 16.4

RICKV I-TSL 22.7

ADAME I-TSL 10.1

WILLT I-TSL 4.5

I-TSL DME ANTENNA

9000

8000

7000

6000

5000

4000

2200

2200

1030

4.7 NM

5.7 NM

3.1 NM

3.1 NM

3.1 NM

3.1 NM

3.1 NM

CATEGORY

A

B

C

D

S-ILS 28R

RA 161/14

150 DA 801

SA CATEGORY I ILS - SPECIAL AIRCREW & AIRCRAFT CERTIFICATION REQUIRED