


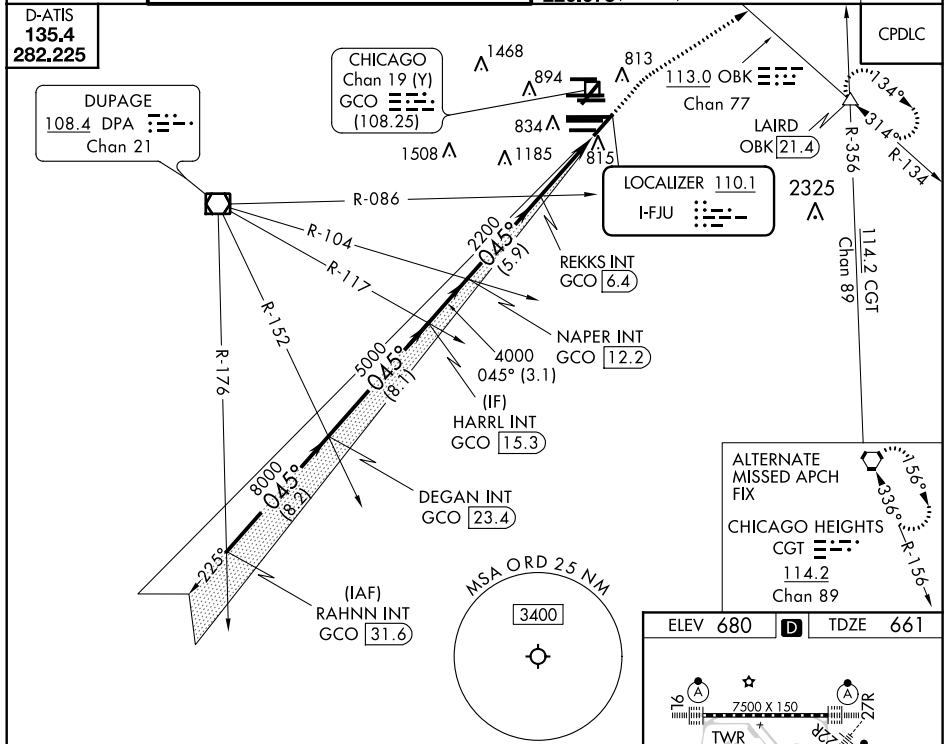
ILS RWY 4R (SA CAT I & II)
CHICAGO O'HARE INTL (ORD)

MAISR

MALSR 	MISSED APPROACH: Climb to 1200 then climbing right turn to 4000 on heading 060° and OBK VOR/DME R-134 to LAIRD INT/OBK 21.4 DME and hold.
---	--

(A5) $\frac{1}{2}$

D-ATIS
135.4
282.225



RAHNN INT GCO [31.6] VGSI and ILS glidepath not coincident (VGSI Angle 3.00/TCH 67). 1200 4000 hdg 060° OBK R-134 LAIRD Δ

DEGAN INT GCO [23.4] HARRL INT GCO [15.3] NAPER INT GCO [12.2] REKKS INT GCO [6.4]

11000 8000 045° 5000 4000 2200 2128 1049

GS 3.00° TCH 52

8.2 NM 8.1 NM 3.1 NM 5.9 NM 4.4 NM

CATEGORY	A	B	C	D
S-ILS 4R	SA CAT I	RA 160/16	150 DA 811	
S-ILS 4R	SA CAT II	RA 111/12	100 DA 761	

SA CATEGORY I & II ILS - SPECIAL AIRCREW
& AIRCRAFT CERTIFICATION REQUIRED