

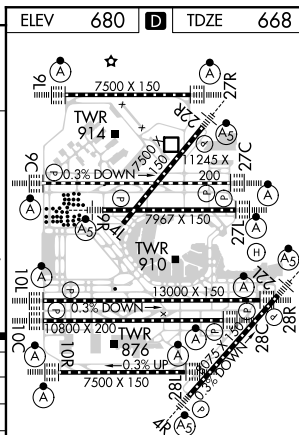
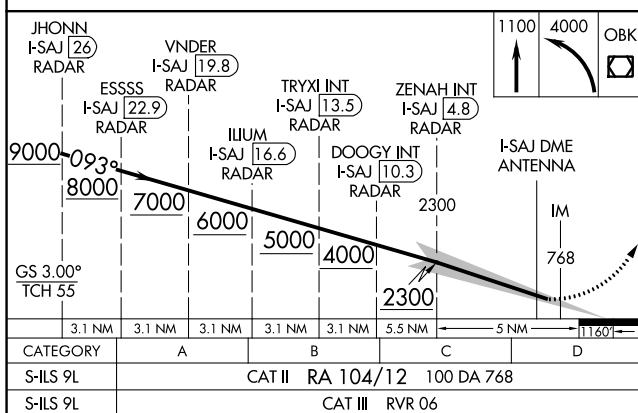
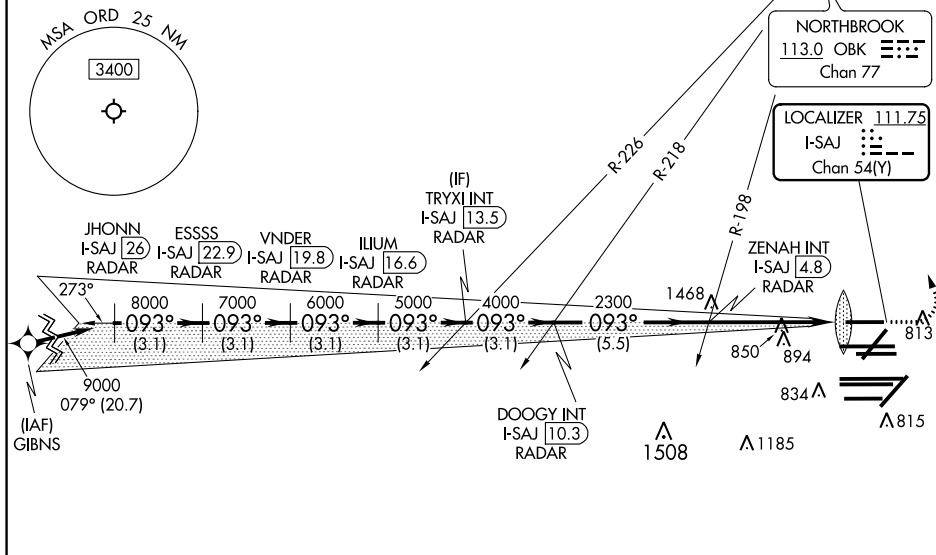
ILS RWY 9L (CAT II & III)
CHICAGO O'HARE INTL (ORD)

MISSED APPROACH: Climb to 1100 then climbing left turn to 4000 direct OBK VOR/DME and hold, continue climb-in-hold to 4000.



D-ATIS
135.4
282.225

CPDLC



CATEGORY II & III ILS - SPECIAL AIRCREW
& AIRCRAFT CERTIFICATION REQUIRED

HIRL all Rwy's
TDZ/CL all Rwy's except 4L

EC-3, 03 DEC 2020 to 31 DEC 2020

EC-3, 03 DEC 2020 to 31 DEC 2020