

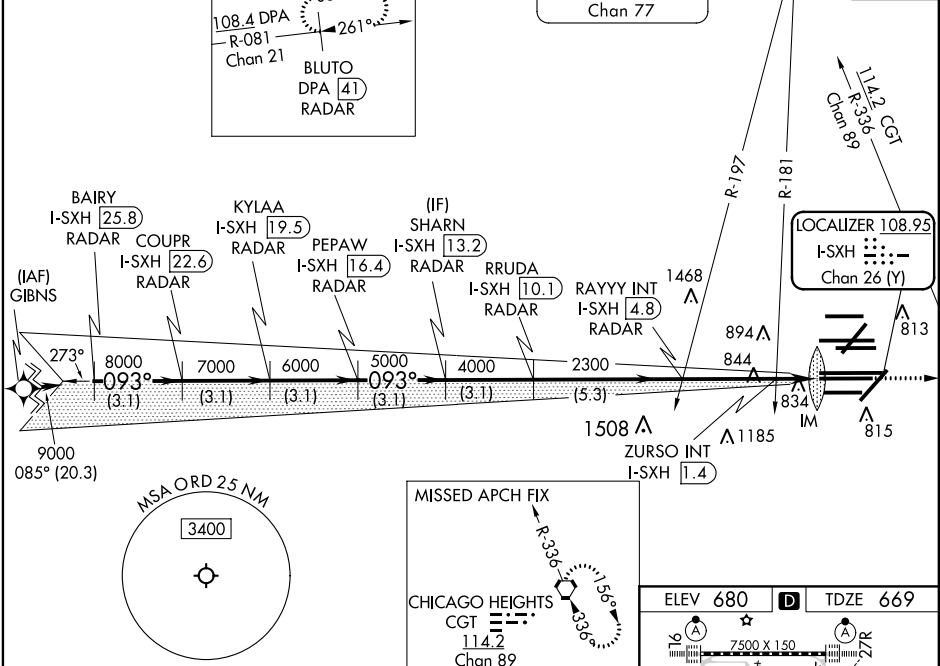
LOC/DME I-SXH 108.95 Chan 26(Y)	APP CRS 093°	Rwy Idg TDZE 669 Apt Elev 680
--	------------------------	---

ILS or LOC RWY 10C
CHICAGO O'HARE INTL (ORD)

From GIBNS: RNAV-1 GPS required.
RNAV 1-GPS or RADAR required for procedure entry. DME or RADAR required.
Simultaneous approach authorized.

CHICAGO APP CON 119.0 292.125	O'HARE TOWERS 128.15 348.0 (Rwy 9L/27R) 120.75 121.15 126.9 132.7 348.0 (10R/28L) (CENTER)	GND CON 124.125 (TWR NORTH) 118.05 (TWR SOUTH) 226.675 (ALL TWRs)	(TWR CENTER) 121.75 (OBND) 121.9 (IBND)	CLNC DEL 121.6
--	--	---	---	--------------------------

D-ATIS 135.4 282.225	ALTERNATE MISSED APCH FIX 108.4 DPA R-081 Chan 21 BLUTO DPA (4) RADAR	NORTHBROOK 113.0 OBK Chan 77	CPDLC
--	--	------------------------------------	-------



BAIRY I-SXH [25.8] RADAR	KYLAA I-SXH [19.5] RADAR	SHARN I-SXH [13.2] RADAR	RAYYY INT I-SXH [4.8] RADAR	ZURSO INT I-SXH [1.4]	I-SXH [0.2]
COUPR I-SXH [22.6] RADAR	PEPAW I-SXH [16.4] RADAR	RRUDA I-SXH [10.1] RADAR			
* LOC only					
S-ILS 10C 869/18 200 (200-½)					
S-LOC 10C 1220/24 551 (600-½) 1220/60 551 (600-1¼)					
ZURSO FIX MINIMUMS (DUAL VOR RECEIVERS OR DME REQUIRED)					
S-LOC 10C 1100/24 431 (500-½) 1100/40 431 (500-¾)					

