

LOC/DME I-UYJ	APP CRS	Rwy ldg
111.9	273°	11245
Chan 56		TDZE 653
		Apt Elev 680

ILS or LOC RWY 27C

CHICAGO O'HARE INTL (ORD)

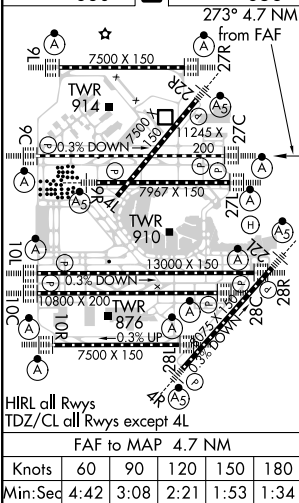
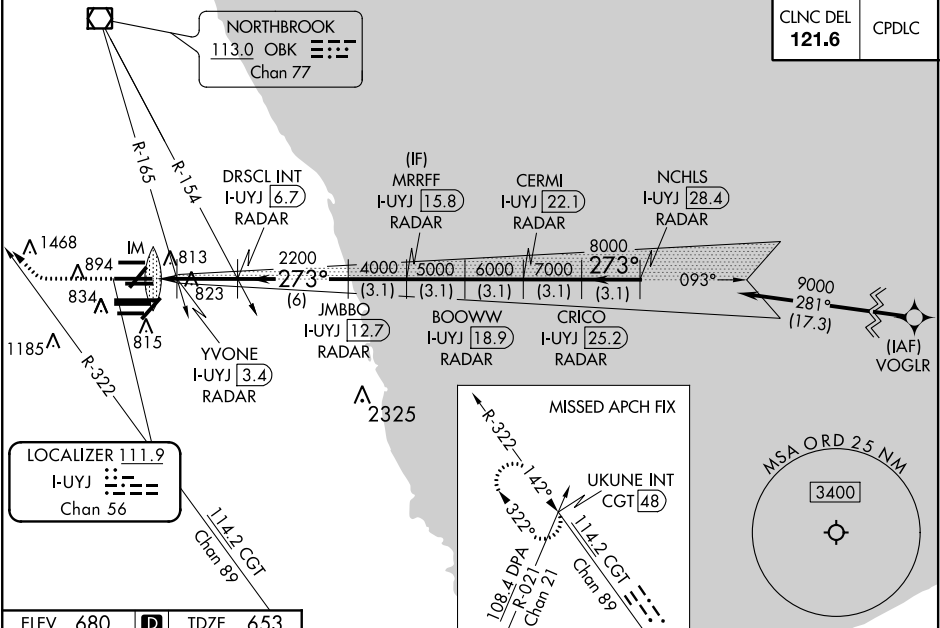
From VOGLR: RNAV 1-GPS required. Aircraft not GPS equipped - RADAR required for procedure entry. DME or RADAR required.

Simultaneous approach authorized. For inop ALS, increase S-LOC 27C Cat C/D visibility to 1½ SM.

ALS-F-2

MISSED APPROACH: Climb to 1100 then climbing right turn to 4000 on heading 290° and CGT R-322 to UKUNE INT/ CGT 48 DME and hold.

D-ATIS	CHICAGO APP CON	O'HARE TOWERS	GND CON
135.4		128.15 348.0 (Rwy 9L/27R)	124.125 (TWR NORTH)
282.225	119.0 292.125	133.0 348.0 (10R/28L)	118.05 (TWR SOUTH)
		120.75 121.15 126.9 132.7 348.0 (CENTER)	121.9 (IBND)
			226.675 (ALL TWRs)



ELEV 680	TDZE 653	273° 4.7 NM from FAF
1100	4000	CGT R-322
UKUNE INT	VGSi and ILS glidepath not coincident (VGSi Angle 3.00°/TCH 75).	NCHLS I-UYJ 28.4 RADAR
*LOC only.	DRSC INT I-UYJ 6.7 RADAR	CERMI I-UYJ 22.1 RADAR
I-UYJ 2	YVONE I-UYJ 3.4 RADAR	BOOWW I-UYJ 18.9 RADAR
JMBBO I-UYJ 12.7 RADAR	CRICO I-UYJ 25.2 RADAR	9000
1160* 2200	4000 5000 6000 7000	273° 8000
0.1 1.3 3.3 NM	6 NM	3.1 NM 3.1 NM 3.1 NM 3.1 NM 3.1 NM
CATEGORY	A	B C D
S-ILS 27C	853/18	200 (200-½)
S-LOC 27C	1160/24	507 (500-½) 1160/55 507 (500-1)
YVONE FIX MINIMUMS (DUAL VOR RECEIVERS or DME REQUIRED)		
S-LOC 27C	1080/24	427 (400-½) 1080/40 427 (400-¾)