

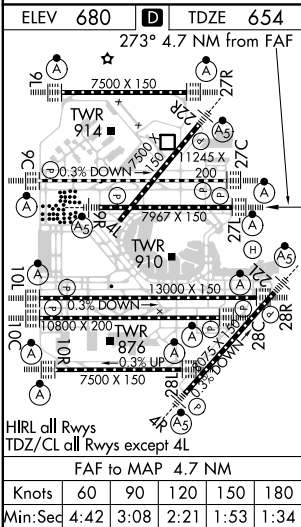
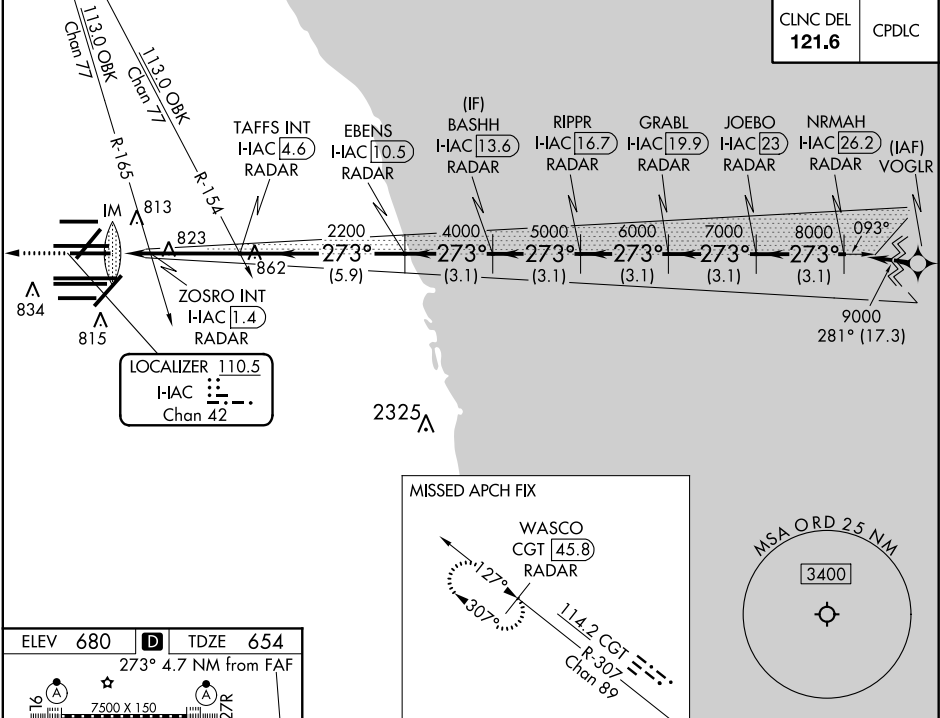
LOC/DME I-IAC	APP CRS	Rwy ldg	7782
110.5	273°	TDZE	654
Chan 42		Apt Elev	680

ILS or LOC RWY 27L

CHICAGO O'HARE INTL (ORD)

From VOGLR: RNAV 1-GPS required. Aircraft not GPS equipped - RADAR required for procedure entry. DME or RADAR required.	ALSF-2	MISSED APPROACH: Climb to 1200 then climb to 4000 on heading 265° and on CGT VORTAC R-307 to WASCO/CGT 45.8 DME/RADAR and hold.
Simultaneous approach authorized.		

D-ATIS	CHICAGO APP CON	O'HARE TOWERS	GND CON	(TWR CENTER)
135.4		128.15 348.0 (Rwy 9L/27R) 133.0 348.0 (10R/28L)	124.125 (TWR NORTH)	121.75 (OBND)
282.225	119.0 292.125	120.75 121.15 126.9 132.7 348.0 (CENTER)	118.05 (TWR SOUTH)	121.9 (IBND)
			226.675 (ALL TWS)	



1200	4000	CGT R-307	WASCO CGT 45.8 RADAR	VGSI and ILS glidepath not coincident (VGSI Angle 3.00/TCH 67).
hdg 265°				
*LOC only	TAFS INT I-IAC 4.6 RADAR	EBENS I-IAC 10.5 RADAR	BASHH I-IAC 13.6 RADAR	GRABL I-IAC 19.9 RADAR
I-IAC DME ANTENNA	ZOSRO INT I-IAC 1.4 RADAR		RIPPR I-IAC 16.7 RADAR	JOEBO I-IAC 23 RADAR
I-IAC 0.1				NRMAH I-IAC 26.2 RADAR
IM	1160*	2200	4000	5000
0.1	1.4	3.2 NM	5.9 NM	3.1 NM
0.1	1.4	3.2 NM	5.9 NM	3.1 NM
CATEGORY	A	B	C	D
S-ILS 27L	854/18	200 (200-1/2)		
S-LOC 27L	1160/24	506 (500-1/2)	1160/55	506 (500-1)
ZOSRO FIX MINIMUMS (DUAL VOR RECEIVERS OR DME REQUIRED)				
S-LOC 27L	1080/24	426 (400-1/2)	1080/40	426 (400-3/4)