

LOC/DME I-VZE	APP CRS	Rwy Idg	10800
108.95	273°	TDZE	651
Chan 26 (Y)		Apt Elev	680

ILS or LOC RWY 28C
CHICAGO O'HARE INTL (ORD)

From VOGLR: RNAV 1-GPS required.
Aircraft not GPS equipped - RADAR required for procedure entry.
DME or RADAR required.

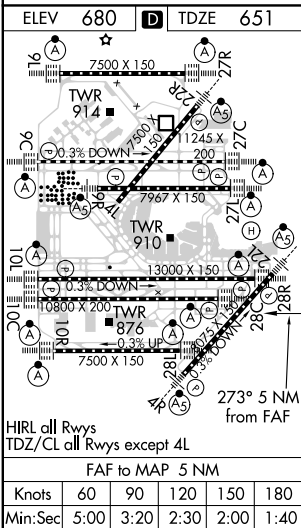
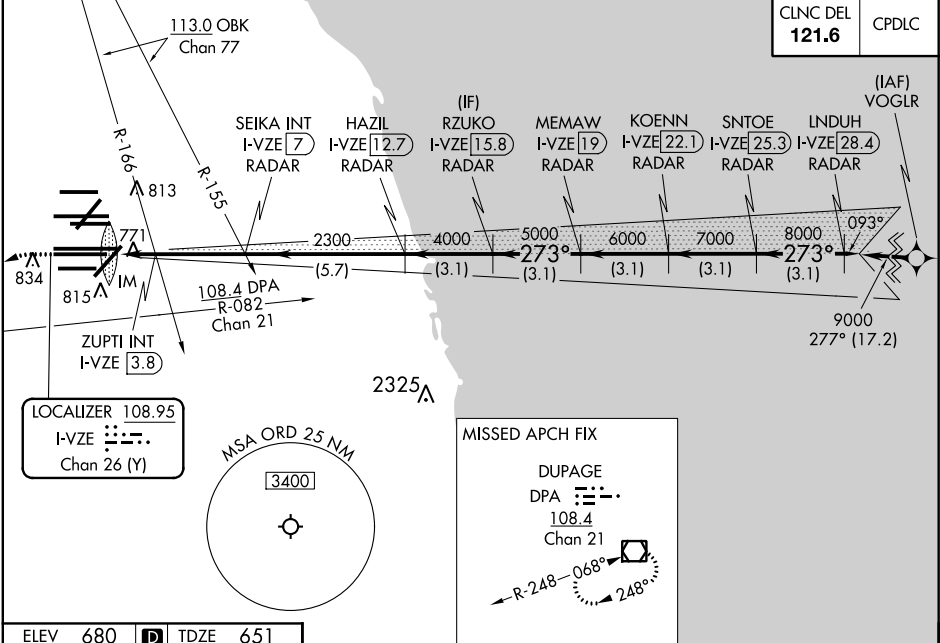


MISSED APPROACH: Climb to 1100 then climbing
left turn to 4000 on heading 215° and DPA
VOR/DME R-082 to DPA VOR/DME and hold.

Simultaneous approach authorized.

D-ATIS	CHICAGO APP CON	O'HARE TOWERS	GND CON	(TWR CENTER)
135.4		128.15 348.0 (Rwy 9L/27R)	124.125 (TWR NORTH)	121.75 (OBND)
282.225	119.0 292.125	133.0 348.0 (10R/28L)	118.05 (TWR SOUTH)	121.9 (IBND)
		120.75 121.15 126.9 132.7 348.0 (CENTER)	226.675 (ALL TWRs)	

CLNC DEL	CPDLC
121.6	



1100	4000	DPA R-082	DPA	RZUKO I-VZE [15.8] RADAR	KOENN I-VZE [22.1] RADAR	LNDUH I-VZE [28.4] RADAR
hdg 215°				MEMAW I-VZE [19] RADAR	SNTOE I-VZE [25.3] RADAR	
*LOC only.				SEIKA INT I-VZE [7] RADAR	HAZIL I-VZE [12.7] RADAR	
				ZUPTI INT I-VZE [3.8] RADAR		
				I-VZE [2] *I-VZE [2.9]		
				IM		
				2300	4000	5000 6000 7000 8000 9000
				273°		GS 3.00° TCH 55
						VGSI and ILS glidepath not coincident (VGSI Angle 3.00/TCH 80).
				0.1 0.9 0.8 3.2 NM 5.7 NM 3.1 NM 3.1 NM 3.1 NM 3.1 NM		
CATEGORY	A	B	C	D		
S-ILS 28C	851/18 200 (200-½)					
S-LOC 28C	1200/24	549 (600-½)	1200/60	549 (600-1¼)		
ZUPTI FIX MINIMUMS (DUAL VOR RECEIVERS OR DME REQUIRED)						
S-LOC 28C	1040/24	389 (400-½)	1040/35	389 (400-¾)		