

ILS or LOC RWY 28L  
CHICAGO O'HARE INTL (ORD)

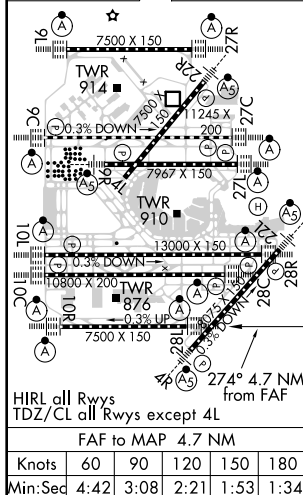
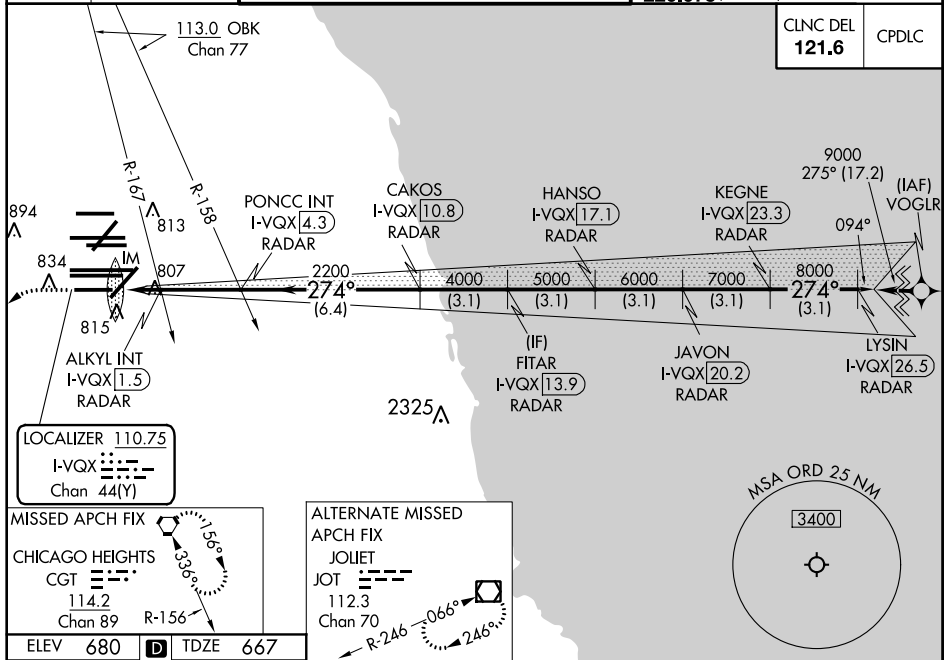
ALSF-2

**MISSED APPROACH:** Climb to 1200 then climbing left turn to 4000 direct CGT VORTAC and hold.

**T** Simultaneous approach authorized.

D-ATIS <b>135.4</b> <b>282.225</b>	CHICAGO APP CON <b>119.0 292.125</b>	O'HARE TOWERS <b>128.15 348.0</b> (Rwy 9L/27R) <b>133.0 348.0</b> (110R/28L) <b>120.75 121.15 126.9 132.7 348.0</b> (CENTER)				GND CON <b>124.125</b> (TWR NORTH) <b>118.05</b> (TWR SOUTH) <b>226.675</b> (ALL TWS)	(TWR CENTER) <b>121.75</b> (OBND) <b>121.9</b> (IBND)
--	--	--	--	--	--	--	---

CLNC DEL <b>121.6</b>	CPDLC
--------------------------	-------



1200 ↑	4000 ↖	CGT ⬢	*LOC only.													
I-VQX DME ANTENNA I-VQX [0.3] IM 0.2 0.9 0.7 2.9 NM 6.4 NM 3.1 NM 3.1 NM 3.1 NM 3.1 NM 3.1 NM			PONCC INT I-VQX [4.3] RADAR 2200		FITAR I-VQX [13.9] RADAR 4000		JAVON I-VQX [20.2] RADAR 5000		HANSO I-VQX [17.1] RADAR 6000		LYSIN I-VQX [26.5] RADAR 7000		KEGNE I-VQX [23.3] RADAR 8000		9000 GS 3.00° TCH 55	
CATEGORY			A		B		C		D							
S-ILS 28L			867/18 200 (200-½)													
S-LOC 28L			1240/24 573 (600-½)				1240-1¼ 573 (600-1¼)									
ALKYL FIX MINIMUMS (DUAL VOR RECEIVERS OR DME REQUIRED)																
S-LOC 28L			1060/24 393 (400-½)				1060/35 393 (400-¾)									

EC-3, 03 DEC 2020 to 31 DEC 2020

DEC-3 03 DEC 2020 to 31 DEC 2020