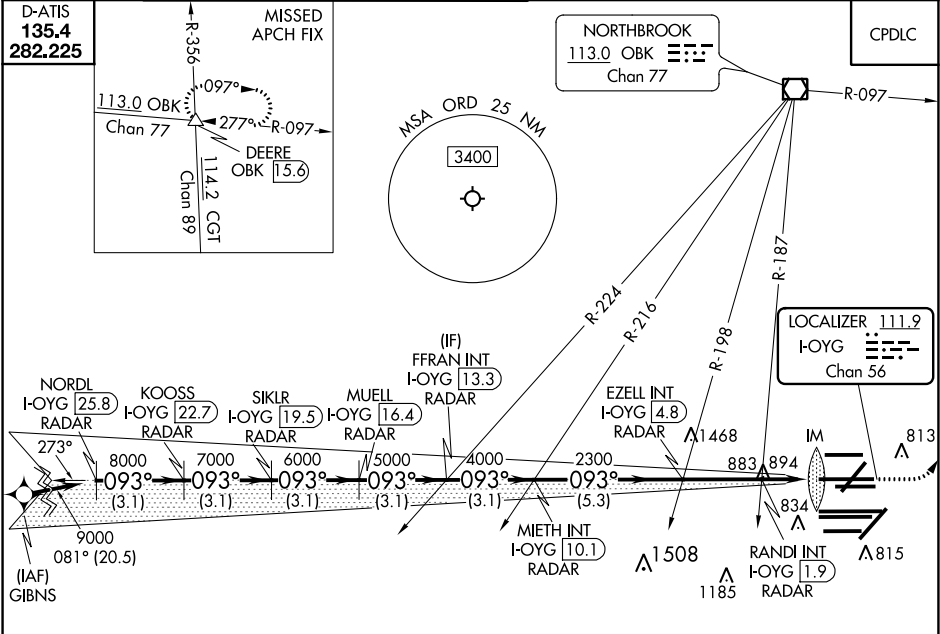


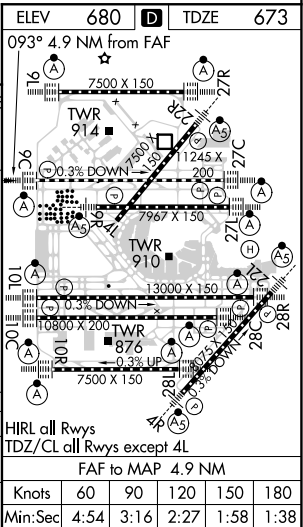
|                |             |                     |
|----------------|-------------|---------------------|
| LOC/DME I-OYG  | APP CRS     | Rwy Idg             |
| <b>111.9</b>   | <b>093°</b> | <b>11245</b>        |
| Chan <b>56</b> |             | TDZE <b>673</b>     |
|                |             | Apt Elev <b>680</b> |

ILS or LOC RWY 9C  
CHICAGO O'HARE INTL (ORD)

|   |   |   |
|---|---|---|
| DME or RADAR required. From GIBNS: RNAV 1-GPS required. Aircraft not GPS equipped - RADAR required for procedure entry. | ALSF-2  | MISSED APPROACH: Climb to 1200 then climbing left turn to 4000 on heading 037° and OBK VOR/DME R-097 to DEERE INT/ OBK 15.6 DME and hold. |
| Simultaneous approach authorized. For inop ALS, increase S-LOC 09C Cat C/D visibility to 1½ SM.                         |   |   |
| CHICAGO APP CON<br><b>119.0 292.125</b>   | O'HARE TOWERS<br><b>128.15 348.0</b> (Rwy 9L/27R) <b>133.0 348.0</b> (110R/28L) <b>120.75 121.15 126.9 132.7 348.0</b> (CENTER) | GND CON (TWR NORTH) <b>124.125</b> (TWR SOUTH) <b>118.05</b> (ALL TWRs) <b>226.675</b>  |
|   |   | (TWR CENTER) <b>121.75</b> (OBND) <b>121.9</b> (IBND)   |
|   |   | CLNC DEL <b>121.6</b>   |



|                        |                        |                        |                        |                            |                           |                            |                           |                     |
|------------------------|------------------------|------------------------|------------------------|----------------------------|---------------------------|----------------------------|---------------------------|---------------------|
| NORDL I-OYG 25.8 RADAR | KOOSS I-OYG 22.7 RADAR | SIKLR I-OYG 19.5 RADAR | MUELL I-OYG 16.4 RADAR | FFRAN INT I-OYG 13.3 RADAR | EZELL INT I-OYG 4.8 RADAR | MIETH INT I-OYG 10.1 RADAR | RANDI INT I-OYG 1.9 RADAR | DEERE INT I-OYG 4.8 |
| 9000                   | 8000                   | 7000                   | 6000                   | 5000                       | 4000                      | 2300                       | 1400                      |                     |
| 3.1 NM                 | 3.1 NM                 | 3.1 NM                 | 3.1 NM                 | 3.1 NM                     | 5.3 NM                    | 2.9 NM                     | 0.8 NM                    | 1.1 NM              |
| CATEGORY               | A                      | B                      | C                      | D                          |                           |                            |                           |                     |
| S-ILS 9C               | 873/18 200 (200-½)     |                        |                        |                            |                           |                            |                           |                     |
| S-LOC 9C               | 1140/24                | 467 (500-½)            | 1140/50                | 467 (500-1)                |                           |                            |                           |                     |



EC-3, 03 DEC 2020 to 31 DEC 2020

EC-3, 03 DEC 2020 to 31 DEC 2020