

CHICAGO, ILLINOIS

AL-166 (FAA)

ILS PRM RWY 10C (SA CAT I)  
(CLOSE PARALLEL)  
CHICAGO O'HARE INTL (ORD)

LOC/DME I-SXH	APP CRS	Rwy Idg
<b>108.95</b>	<b>093°</b>	<b>10540</b>
Chan 26(Y)		TDZE <b>669</b>
		Apt Elev <b>680</b>

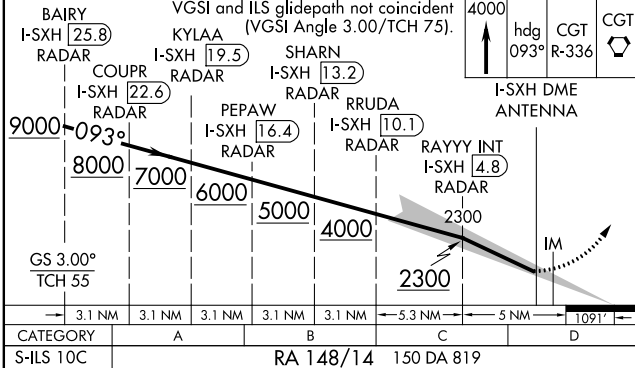
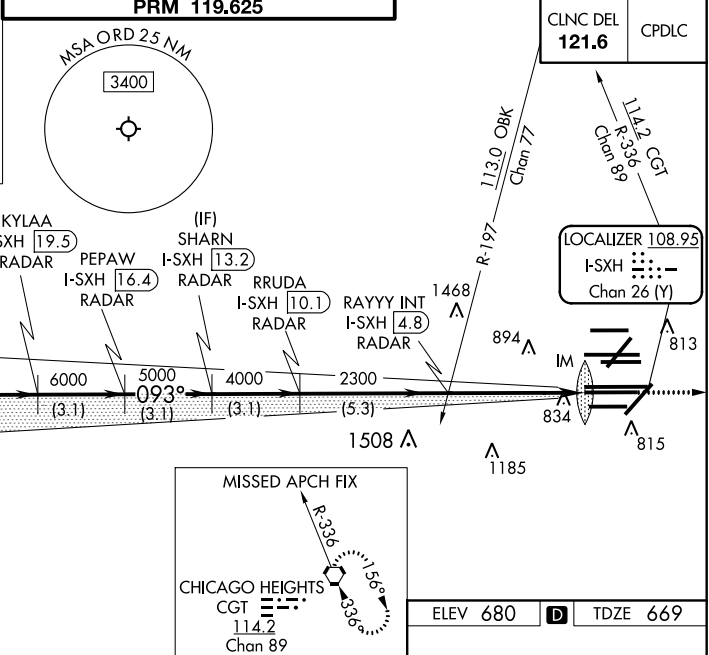
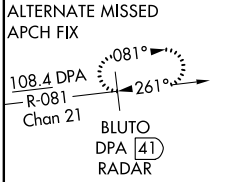
RNAV 1-GPS or RADAR required for procedure entry. DME or RADAR required.  
From GIBNS: RNAV-1 GPS required.  
Requires specific OPSPEC, MSPEC, or LOA approval and use of HUD to DH. Simultaneous approach authorized. Use of FD or AP required during simultaneous operations. Dual VHF comm required. See additional requirements on AAUP.

ALSF-2  
MISSED APPROACH: Climb to 4000 on heading 093° and CGT VORTAC R-336 to CGT VORTAC and hold.

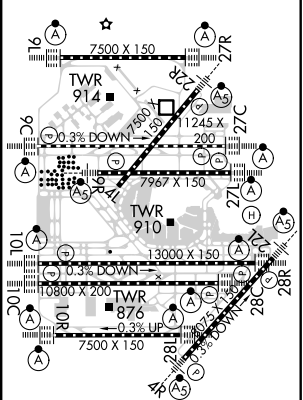
D-ATIS	CHICAGO APP CON
<b>135.4</b>	
<b>282.225</b>	<b>119.0 292.125</b>

O'HARE TOWERS			
<b>128.15</b>	<b>348.0</b>	<b>133.0</b>	<b>348.0</b>
(Rwy 9L/27R) (10R/28L)			
<b>120.75</b>	<b>121.15</b>	<b>126.9</b>	<b>132.7</b>
<b>PRM 119.625</b>			

GND CON	(TWR CENTER)
<b>124.125</b>	<b>121.75</b>
(TWR NORTH)	(OBND)
<b>118.05</b>	<b>121.9</b>
(TWR SOUTH)	(LBND)
<b>226.675</b>	
(ALL TWRS)	



ELEV 680	TDZE 669
----------	----------



SA CATEGORY I ILS - SPECIAL AIRCREW  
& AIRCRAFT CERTIFICATION REQUIRED

HIRL all Rwy's  
TDZ/CL all Rwy's except 4L

CHICAGO, ILLINOIS  
Amdt 1A 03JAN19

41°59'N-87°54'W  
ILS PRM RWY 10C (SA CAT I) (CLOSE PARALLEL)

CHICAGO O'HARE INTL (ORD)

EC-3, 03 DEC 2020 to 31 DEC 2020

EC-3, 03 DEC 2020 to 31 DEC 2020