

LOC/DME I-BYW 110.9 Chan 46	APP CRS 091°	Rwy Idg TDZE 680 Apt Elev 680
---	------------------------	---

ILS Y or LOC Y RWY 10R
CHICAGO O'HARE INTL (ORD)

RNAV 1-GPS or RADAR required for procedure entry. DME or RADAR required.
From GIBNS: RNAV-1 GPS required.

Simultaneous approach authorized. Inop table does not apply to S-ILS 10R all Cts.
For inop ALS, increase S-LOC 10R Cat A and B visibility to 1 SM.
Rwy 10R helicopter visibility reduction below 3/4 SM NA.

CHICAGO APP CON	O'HARE TOWERS 128.15 348.0 (Rwy 9L/27R) 133.0 348.0 (10R/28L) 124.125 (TWR NORTH) 118.05 (TWR SOUTH) 226.675 (ALL TWRS)	GND CON 121.75 (TWR CENTER) 121.9 (TWR BND) 121.9 (TWR BND)	CLNC DEL 121.6
--------------------	---	---	--------------------------

D-ATIS
135.4
282.225

ALTERNATE MISSED
APCH FIX

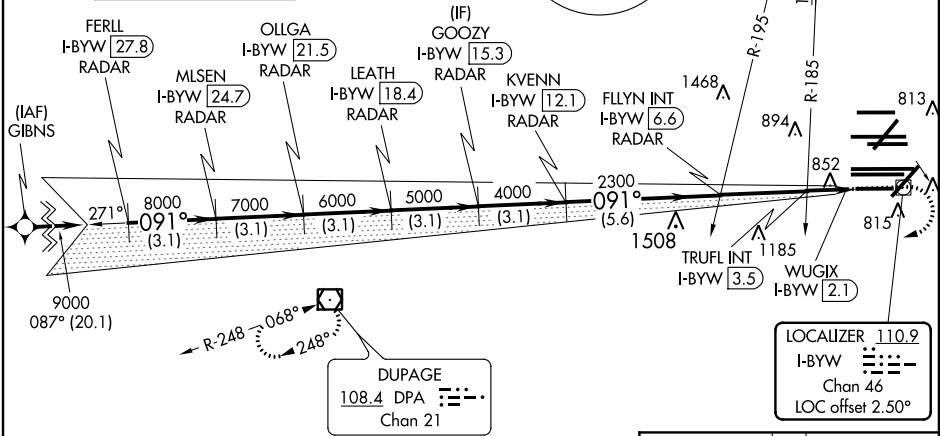
JOLIET
JOT
112.3
Chan 70

R-246 066° 246°

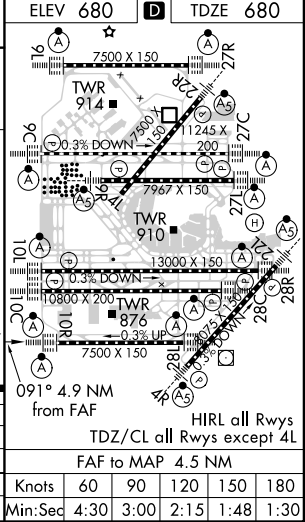
MSA ORD 25 NM
3400

113.0 Obk Chan 77

CPDLC



FERLL I-BYW 27.8 RADAR	OLLGA I-BYW 21.5 RADAR	GOOZY I-BYW 15.3 RADAR	FLYNN INT I-BYW 6.6 RADAR	TRUFL INT I-BYW 3.5 RADAR	WUGIX I-BYW 2.1 RADAR
9000	8000	7000	6000	5000	4000
3.1 NM	3.1 NM	3.1 NM	3.1 NM	3.1 NM	0.6 NM
GS 3.00° TCH 55					
*LOC only.					
1200 4000 DPA					
CATEGORY A B C D					
S-ILS 10R 930-3/4 250 (300-3/4)					
S-LOC 10R 1220-3/4 540 (600-3/4) 1220-1 540 (600-1)					
TRUFL FIX MINIMUMS (DUAL VOR RECEIVERS OR DME REQUIRED)					
S-LOC 10R 1120-3/4 440 (500-3/4)					



EC-3, 03 DEC 2020 to 31 DEC 2020

EC-3, 03 DEC 2020 to 31 DEC 2020