

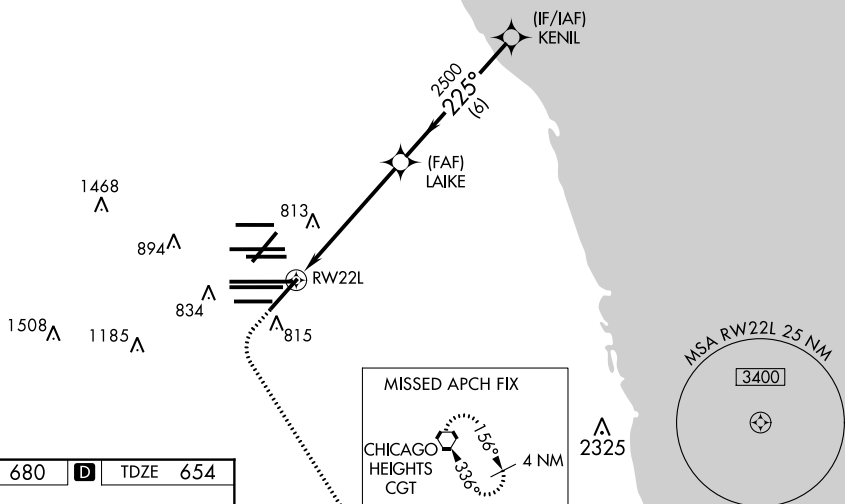
RNAV (GPS) RWY 22L  
CHICAGO O'HARE INTL (ORD)

CHICAGO O'HARE INTL (ORD)

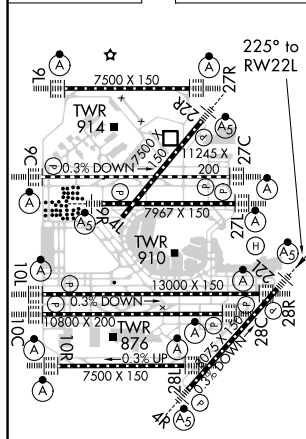
MALSR

**MISSED APPROACH:** Climb to 1100 then climbing left turn to 4000 direct CGT VORTAC and hold.

CLNC DEL <b>121.6</b>	CPDLC
--------------------------	-------



ELEV 680	<b>D</b>	TDZE 654
----------	----------	----------



HIRL all Rwy's  
TDZ/CL all Rwy's except 4L

