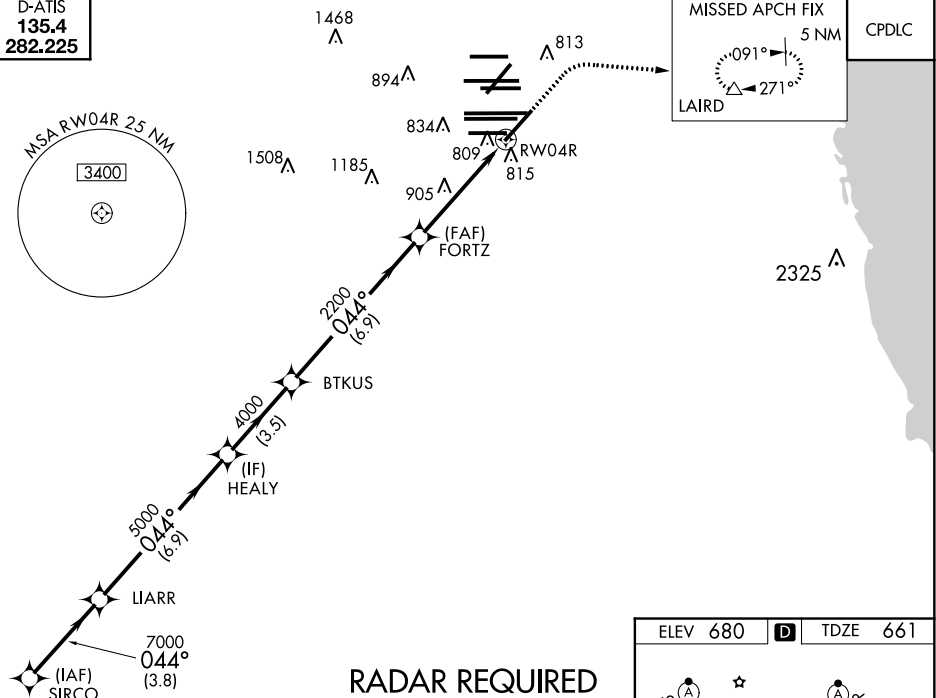


RNAV (GPS) RWY 4R

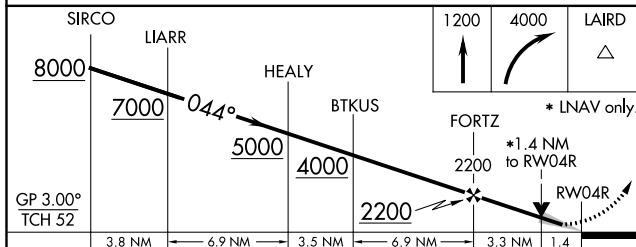
CHICAGO O'HARE INTL (ORD)

MISSED APPROACH: Climb to 1200 then climbing right turn to 4000 direct LAIRD and hold, continue climb-in-hold to 4000.

D-ATIS
135.4
282.225



RADAR REQUIRED



CATEGORY		A	B	C	D
LPV	DA	861/18		200 (200-½)	
INAV/ VNAV	DA	990/32		329 (400-⅝)	
INAV	MDA	1160/24	499 (500-½)	1160/50	499 (500-1)
C CIRCLING		1220-1	540 (600-1)	1220-1½ 540 (600-1½)	1460-2½ 780 (800-2½)

