

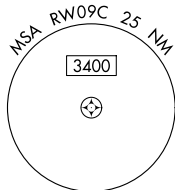
RNAV (GPS) RWY 9C
CHICAGO O'HARE INTL (ORD)

T Simultaneous approach authorized. LNAV procedure NA during simultaneous operations. Use of FD or AP required during simultaneous operations. For uncompensated Baro-VNAV systems, LNAV/VNAV NA below -19°C or above 54°C. For inop ALS, increase LNAV/VNAV all cats visibility to RVR 4500 and LNAV Cat C/D to 1 $\frac{3}{8}$ SM.

ALSF-2

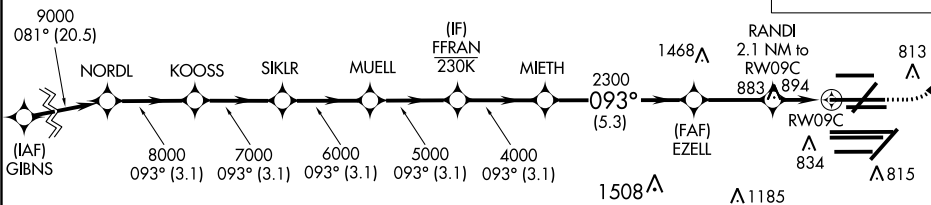
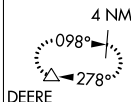
MISSED APPROACH: Climb to 1200 then climbing left turn to 4000 direct DEERE and hold.

D-ATIS 135.4 282.225	CHICAGO APP CON 119.0 292.125	O'HARE TOWERS 128.15 348.0 (Rwy 9L/27R) 133.0 348.0 (10R/28L) 120.75 121.15 126.9 132.7 348.0 (CENTER)				GND CON (TWR NORTH) 124.125 (TWR SOUTH) 118.05 (ALL TWS) 226.675	(TWR CENTER) 121.75 (IBND) 121.9 (IBND)
--	--	---	--	--	--	---	---

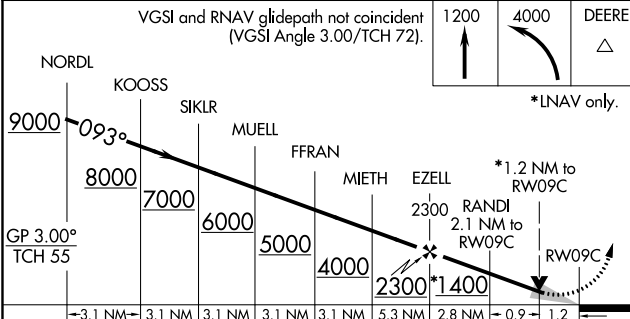


CLNC DEL 121.6	CPDLC
--------------------------	-------

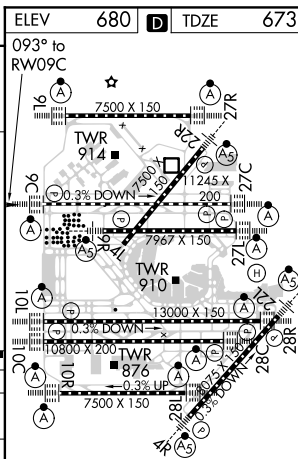
MISSED APCH FIX



VGSI and RNAV glidepath not coincident
(VGSI Angle 3.00/TCH 72).



CATEGORY		A	B	C	D
LPV	DA	873/18		200 (200-½)	
RNAV/ VNAV	DA	976/24		303 (300-½)	
RNAV	MDA	1140/24	467 (500-½)	1140/50	467 (500-1)



HIRL all Rwy's
TDZ/CL all Rwy's except 4L