

CHICAGO, ILLINOIS

AL-166 (FAA)


RNAV (GPS) PRM RWY 10C (CLOSE PARALLEL)

CHICAGO O'HARE INTL (ORD)

WAAS CH 81934 W10B	APP CRS 093°	Rwy Idg 10540 TDZE 669 Apt Elev 680
--	------------------------	--

V DME/DME RNP-0.3 NA. Simultaneous approach authorized. Dual VHF comm required. See additional requirements on AAUP. For uncompensated Baro-VNAV systems, LNAV/VNAV NA below -19°C (-2°F) or above 54°C (130°F). Use of FD or AP providing RNAV track guidance required during simultaneous operations.

ALSF-2

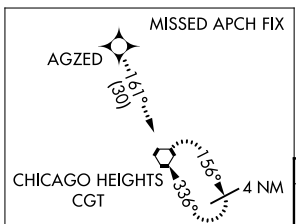
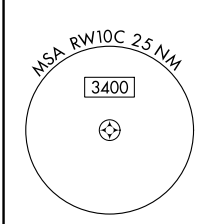
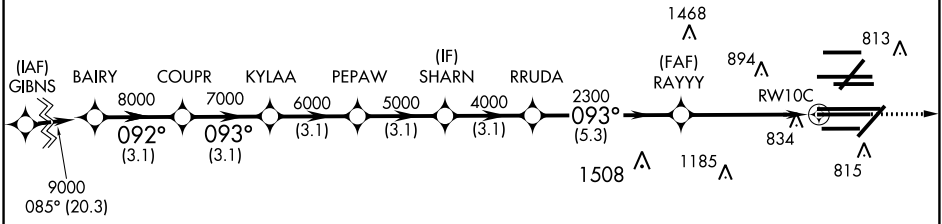






MISSED APPROACH: Climb to 4000 direct AGZED and on track 161° to CGT VORTAC and hold.

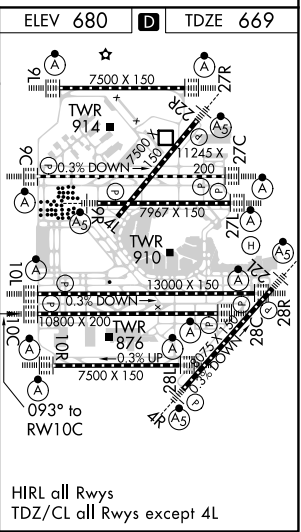
D-ATIS 135.4 282.225	CHICAGO APP CON 119.0 292.125	O'HARE TOWERS 128.15 348.0 (Rwy 9L/27R) 133.0 348.0 (10R/28L) 120.75 121.15 126.9 132.7 348.0 (CENTER) PRM 119.625	GND CON (TWR CENTER) 124.125 (TWR NORTH) 121.75 (OBND) 118.05 (TWR SOUTH) 121.9 (IBND) 226.675 (ALL TWRs)
--	---	---	---

CLNC DEL 121.6	CPDLC
--------------------------	-------

RADAR REQUIRED



VGSI and RNAV glidepath not coincident (VGSI Angle 3.00/TCH 75).						4000 ↑	AGZED 	tr 161° 	CGT 
BAIRY	COUPR	KYLAA	PEPAW	SHARN	RRUDA	RAYYY	RWY10C 		
9000	8000	7000	6000	5000	4000	2300			
GP 3.00° TCH 55									
3.1 NM		3.1 NM		3.1 NM		5.3 NM		5 NM	
CATEGORY		A		B		C		D	
LPV	DA	869/18					200 (200-½)		
LNAV/ VNAV	DA	1056/40					387 (400-¾)		



CHICAGO, ILLINOIS
Orig-A 17AUG17

41°59'N-87°54'W

CHICAGO O'HARE INTL (ORD)

RNAV (GPS) PRM RWY 10C (CLOSE PARALLEL)

EC-3, 03 DEC 2020 to 31 DEC 2020

EC-3, 03 DEC 2020 to 31 DEC 2020