

CHICAGO, ILLINOIS

AL-166 (FAA)

RNAV (GPS) PRM Y RWY 28L

(CLOSE PARALLEL)

CHICAGO O'HARE INTL (ORD)

20310

WAAS CH 93839 W28E	APP CRS 275°	Rwy Idg TDZE 667 Apt Elev 680
--	------------------------	---

RNP APCH. RADAR required.

▼ For uncompensated Baro-VNAV systems, LNAV/VNAV NA below -19°C or above 54°C. Simultaneous approach authorized. Use of FD or AP required during simultaneous operations. Dual VHF comm required. See additional requirements on AAUP.

ALSF-2



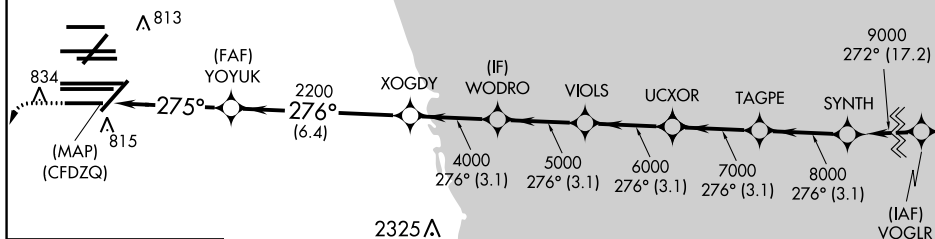
MISSED APPROACH: Climb to 1200 then climbing left turn to 4000 direct CGT VORTAC and hold.

D-ATIS 135.4 282.225	CHICAGO APP CON 119.0 292.125	O'HARE TOWERS 128.15 348.0 (Rwy 9L/27R) 133.0 348.0 (10R/28L) 120.75 121.15 126.9 132.7 348.0 (CENTER) PRM 128.05	GND CON (TWR CENTER) 124.125 (TWR NORTH) 121.75 (OBND) 118.05 (TWR SOUTH) 121.9 (IBND) 226.675 (ALL TWS)
--	--	--	--

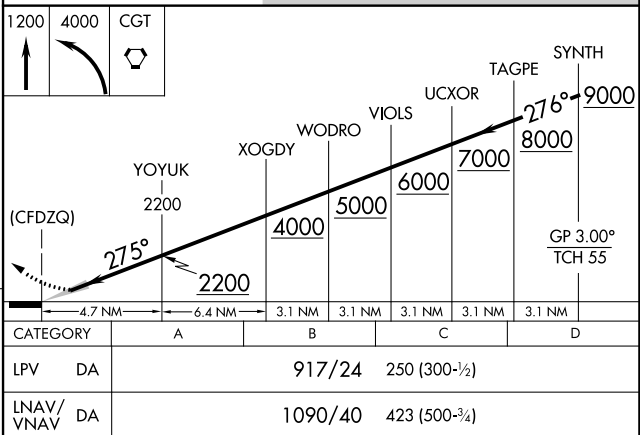
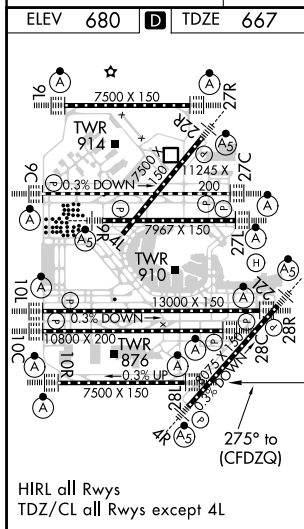
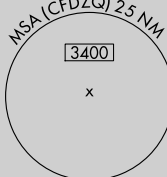
CLNC DEL
121.6

CPDLC

Final approach course offset 2.50°.



MISSED APCH FIX



CHICAGO, ILLINOIS

41°59'N-87°54'W

CHICAGO O'HARE INTL (ORD)

Orig-A 13SEP18

RNAV (GPS) PRM Y RWY 28L (CLOSE PARALLEL)

EC-3, 03 DEC 2020 to 31 DEC 2020

EC-3, 03 DEC 2020 to 31 DEC 2020