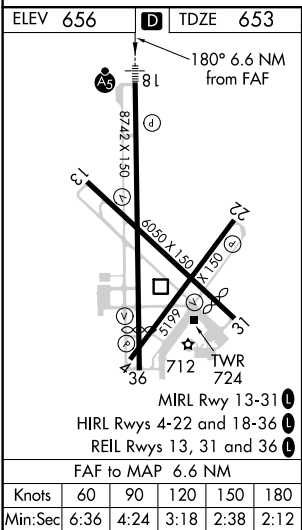
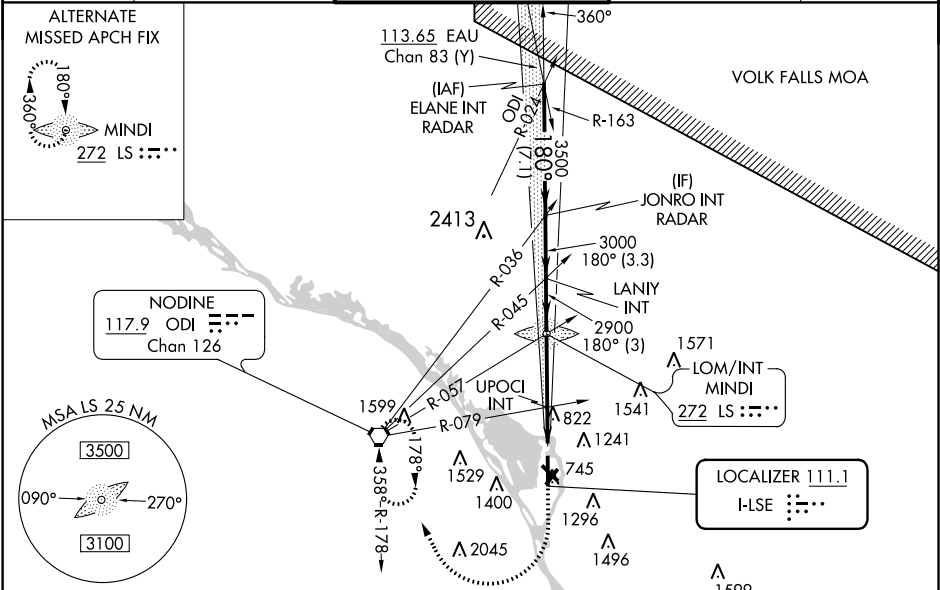


LOC I-LSE 111.1	APP CRS 180°	Rwy Idg 8536 TDZE 653 Apt Elev 656
---------------------------	------------------------	---

ILS or LOC RWY 18
LA CROSSE RGNL (LSE)

RADAR required for procedure entry.		MALSR 	MISSED APPROACH: Climb to 2400 then climbing right turn to 3400 direct ODI VORTAC and hold.
	Circling Rwy 22 NA at night. For inop ALS increase UPOCI fix minimums S-LOC Cats C/D visibility to 1 1/2 SM.		
	-20°C		

ATIS 124.95	MINNEAPOLIS CENTER 128.6 363.0	LA CROSSE TOWER ★ 118.45 (CTAF) 251.075	GND CON 121.8	UNICOM 122.95
-----------------------	--	---	-------------------------	-------------------------



JONRO INT RADAR		LANIY INT	MINDI LOM/INT	UPOCI INT	2400 3400 ODI
3500		180°	3000	2900	*1600
GS 3.00° TCH 55		3.3 NM	3 NM	3.7 NM	2.9 NM
CATEGORY					
S-ILS 18	853-1/2 200 (200-1/2)				
S-LOC 18	1600-3/4	947 (1000-3/4)	1600-2	947 (1000-2)	
CIRCLING	1600-1 1/4	944 (1000-1 1/4)	1760-3 1104 (1200-3)	1820-3 1164 (1200-3)	
UPOCI FIX MINIMUMS (DUAL VOR RECEIVERS REQUIRED)					
S-LOC 18	1140-1/2	487 (500-1/2)	1140-1	487 (500-1)	
CIRCLING	1140-1 484 (500-1)	1460-1 804 (900-1)	1760-3 1104 (1200-1)	1820-3 1164 (1200-3)	

EC-3, 03 DEC 2020 to 31 DEC 2020

EC-3, 03 DEC 2020 to 31 DEC 2020