

WAAS CH 72809 W18A	APP CRS 180°	Rwy Idg TDZE 653 Apt Elev 656
--	------------------------	---

RNAV (GPS) RWY 18

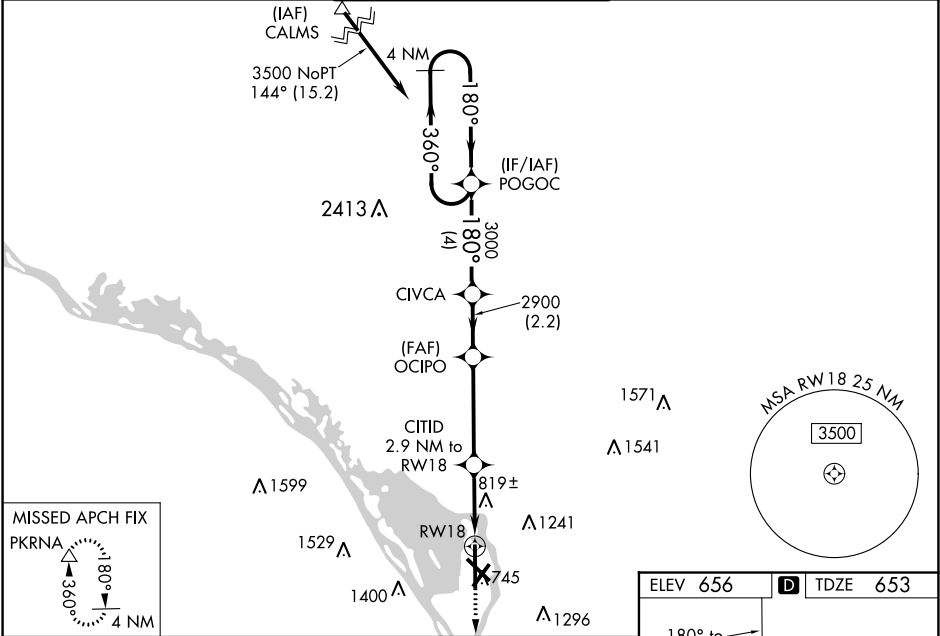
LA CROSSE RGNL (LSE')

RNP APCH.		LA CROSSE TOWER ★		GND CON	UNICOM
ATIS 124.95		MINNEAPOLIS CENTER 128.6 363.0		118.45 (CTAF) 251.075	121.8
				121.8	122.95

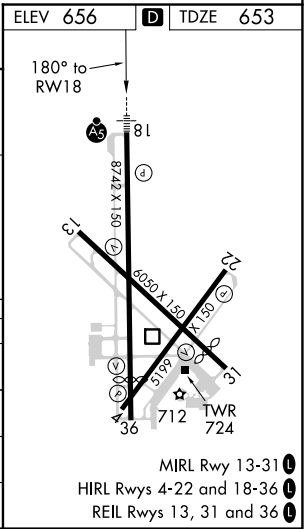
For uncompensated Baro-VNAV systems, LNAV/VNAV NA below -27° C or above 54° C. When local altimeter setting not received, use Winona altimeter setting: increase LPV DA to 987 feet, LNAV/VNAV DA to 1257 feet and all MDA 60 feet. Increase LNAV/VNAV all Cats visibility ¼ SM and Circling Cat C visibility ¼ SM. For inoperative MALSR, increase LPV all Cats visibility ½ SM. LNAV minimums NA with Winona altimeter setting. Baro-VNAV and VDP NA when using Winona altimeter setting. Circling to Rwy 22 NA at night.

MALSR

MISSED APPROACH:
Climb to 3000 direct
PKRNA and hold.



4 NM Holding Pattern		POGOC		CIVCA		OCIPPO		CITID		RW18	
3500		360°		180°		3000		2900		1620	
GP 3.00°		TCH 55		4 NM		2.2 NM		3.9 NM		1.1 NM	
CATEGORY		A		B		C		D			
LPV DA				925-½		272 (300-½)					
LNAV/VNAV DA				1204-1½		551 (600-1½)					
LNAV MDA		1360-½		707 (800-½)		1360-1½		707 (800-1½)		1360-1¾	
CIRCLING		1360-1		1460-1		1760-3		1820-3		1164 (1200-3)	
		704 (800-1)		804 (900-1)		1104 (1200-3)		1164 (1200-3)			



EC-3, 03 DEC 2020 to 31 DEC 2020

EC-3, 03 DEC 2020 to 31 DEC 2020