

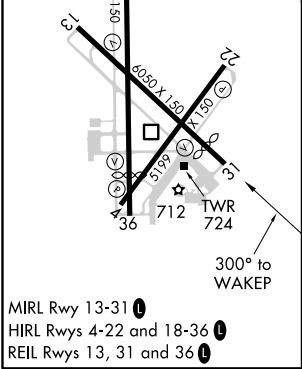
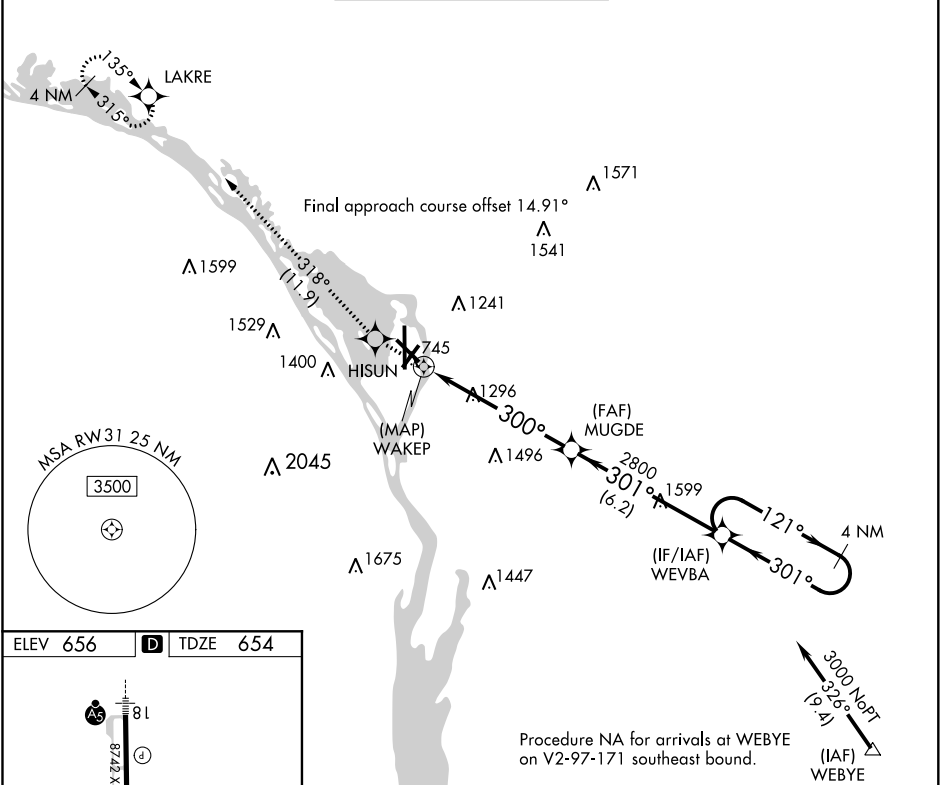
APP CRS	Rwy Idg	5310
300°	TDZE	654
	Apt Elev	656

RNAV (GPS) RWY 31

LA CROSSE RGNL (LSE')

<div><div><div>⚠</div><div>⚠</div><div>❄</div></div><div>-20°C</div></div> <div>DME/DME RNP-0.3 NA. Circling Rwy 22 NA at night. Helicopter visibility reduction below 1 SM NA. When local altimeter setting not received, use Winona altimeter setting and increase all MDA 60 feet.</div> <div>MISSED APPROACH: Climb to 3000 direct HISUN and on track 318° to LAKRE and hold.</div>

ATIS 124.95	MINNEAPOLIS CENTER 128.6 363.0	LA CROSSE TOWER ★ 118.45 (CTAF) 251.075	GND CON 121.8	UNICOM 122.95
----------------	-----------------------------------	--	------------------	------------------



3000 ↑	HISUN ✧	tr 318°	LAKRE ✧	WEVBA	4 NM Holding Pattern
				121° → 3000	
				← 301°	
WAKEP				MUGDE	
300°				301°	
2800					
Visual Segment - Obstacles.					
0.4 6.1 NM 6.2 NM					
CATEGORY	A		B	C	D
LNAV MDA	1720-1¼ 1066 (1100-1¼)		1720-1½ 1066 (1100-1½)	1720-3 1066 (1100-3)	
CIRCLING	1720-1¼ 1064 (1100-1¼)		1720-1½ 1064 (1100-1½)	1760-3 1104 (1200-3)	1820-3 1164 (1200-3)

EC-3, 03 DEC 2020 to 31 DEC 2020

EC-3, 03 DEC 2020 to 31 DEC 2020