

WAAS CH 99528 W36A	APP CRS 360°	Rwy Idg 5199 TDZE 428 Apt Elev 430
--	------------------------	---

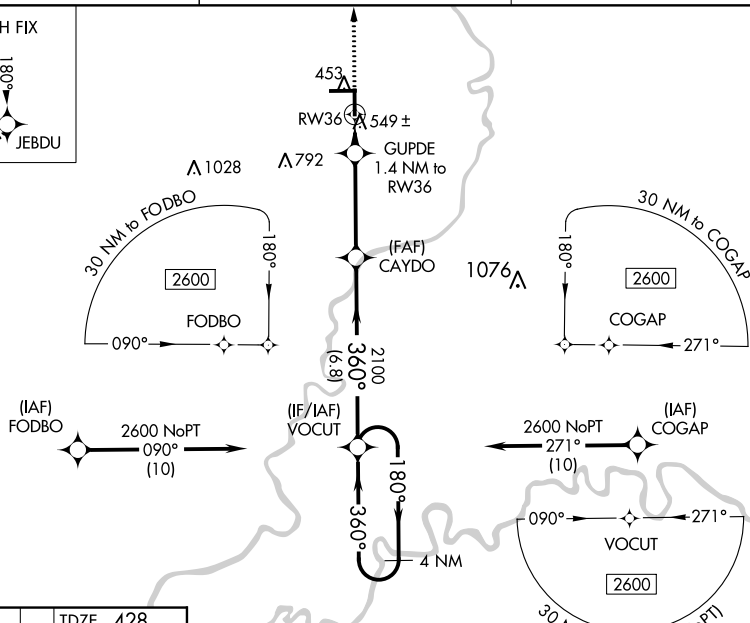
RNAV (GPS) RWY 36
LAWRENCEVILLE-VINCENNES INTL (LWV)

T Baro-VNAV NA when using Mount Carmel altimeter setting. For uncompensated Baro-VNAV systems, LNAV/VNAV NA below -15°C (5°F) or above 41°C (105°F). Rwy 36 Straight-in and Circling minimums NA at night. DME/DME RNP-0.3 NA. Helicopter visibility reduction below 1 SM NA. When local altimeter setting not received, use Mount Carmel altimeter setting; increase all DA 26 feet and all MDA 40 feet; increase LNAV/VNAV visibility all Cats ½ mile and LNAV visibility Cats C and D ½ mile.

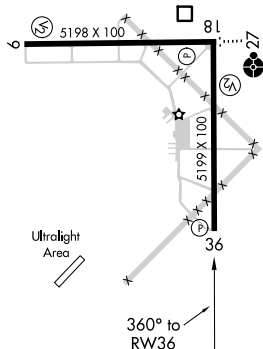
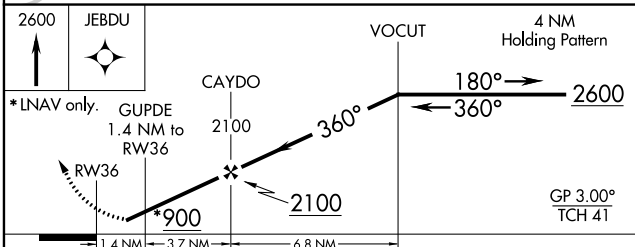
MISSED APPROACH:
Climb to 2600 direct
JEBDU and hold.

ASOS 118.0	EVANSVILLE APP CON ★ 125.6 343.7	UNICOM 122.8 (CTAF) 0
----------------------	--	---------------------------------

MISSED APCH FIX



ELEV 430	TDZE 428
----------	----------

REIL Rwys 9, 27, 18 and 36 **L**
MIRI Rwys 9-27 and 18-36 **L**

CATEGORY	A	B	C	D
LPV DA	678-1	250 (300-1)		
LNAV/ VNAV DA	824-1 $\frac{3}{8}$	396 (400-1 $\frac{3}{8}$)		
LNAV MDA	800-1	372 (400-1)		
CIRCLING	880-1	450 (500-1)	900-1 $\frac{1}{2}$ 470 (500-1 $\frac{1}{2}$)	980-2 550 (600-2)