

LOC/DME	I-LNR	APP CRS	Rwy Idg
108.35		270°	5000
Chan	20(Y)	TDZE	717
		Apt Elev	717

LOC RWY 27

TRI-COUNTY RGNL (LNR)

DME required. RADAR required for procedure entry.

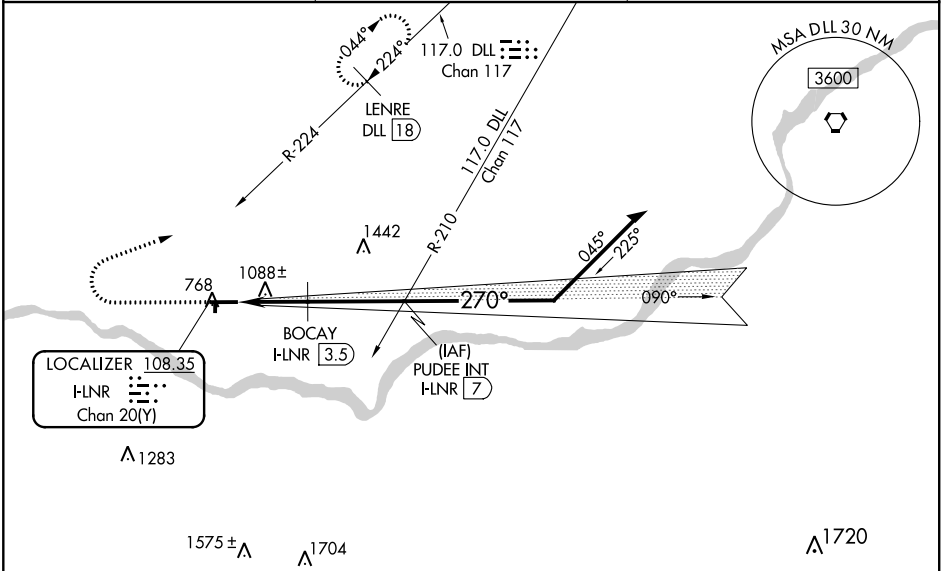
NA

-30°C

Circling Rwy 18, 36 NA at night. Rwy 27 helicopter visibility reduction below ¾ SM NA. If local altimeter setting not received, use Dane County Rgnl-Truax Field altimeter setting and increase all MDA 120 feet. Increase S-27 visibility Cat A/B ¼ SM, Cat C ½ SM, Circling visibility Cat B ¼ SM, Cat C ½ SM. Increase BOCAV fix minimums S-27 visibility Cat C ¼ SM, Circling Cat A/B ¼ SM, Cat C ½ SM.

MISSED APPROACH:
Climb to 2200 then climbing right turn to 3300 on heading 070° and on DLL R-224 to LENRE/DLL VORTAC 18 DME and hold.

ASOS 119.425	MADISON APP CON ★ 135.45 343.7	UNICOM 123.0 (CTAF) 0
------------------------	--	---------------------------------



ELEV 717

TDZE 717

2200

3300

hdg 070°

DLL R-224

LENRE DLL 18

VGSI and descent angles not coincident (VGSI Angle 4.00/TCH 34).

PUDEE INT I-LNR 7

Remain within 10 NM

270° 6 NM from FAF

5000 X 75

1850 X 60

36

270°

6000

BOCAV I-LNR 3.5

I-LNR 2.4

3.05° TCH 33

1580*

2700

090°

2700

*1680 when using Dane County Rgnl-Truax Field altimeter setting.

CATEGORY	A	B	C	D
S-LOC 27	1580-1 863 (900-1)	1580-1¼ 863 (900-1¼)	1580-2½ 863 (900-2½)	NA
CIRCLING	1580-1¼ 863 (900-1¼)		1580-2½ 863 (900-2½)	NA
BOCAV FIX MINIMUMS				
S-LOC 27	1360-1 643 (700-1)		1360-1¾ 643 (700-1¾)	NA
CIRCLING	1520-1 803 (900-1)		1560-2½ 843 (900-2½)	NA