

WAAS CH 69506 W27A	APP CRS 270°	Rwy Idg TDZE 717 Apt Elev 717
--	------------------------	---

RNAV (GPS) RWY 27

TRI-COUNTY RGNL (LNR)

RNP APCH

⚠

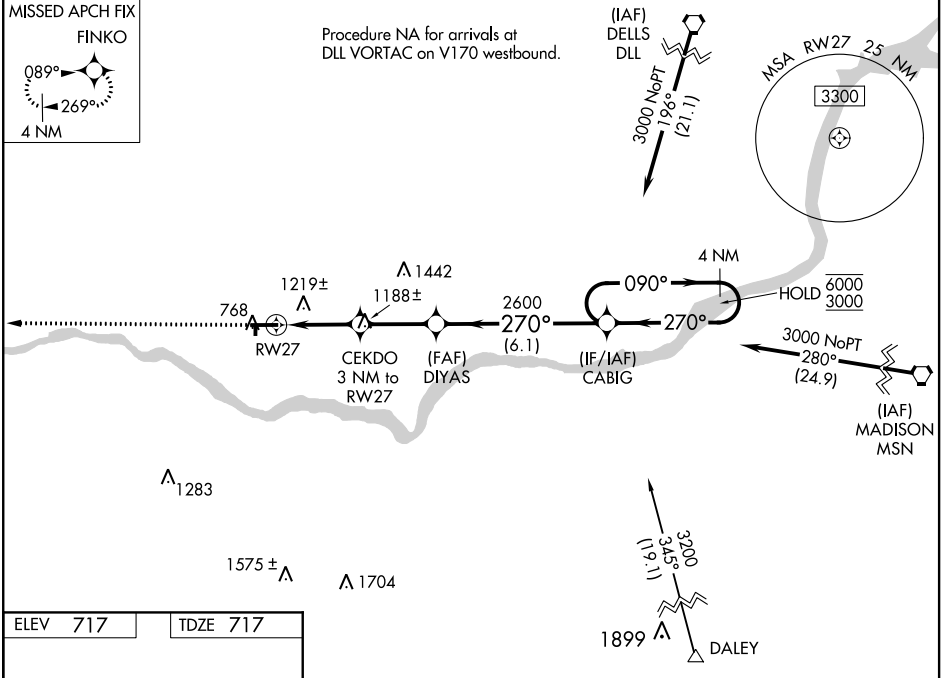
⚠

⚠

Circling Rwy 18, 36 NA at night. Baro-VNAV and VDP NA when using Dane County Rgnl-Truax Field altimeter setting. Rwy 27 helicopter visibility reduction below ¾ SM NA. For uncompensated Baro-VNAV systems, LNAV/VNAV NA below -22°C or above 54°C. When local altimeter setting not received, use Dane County Rgnl-Truax Field altimeter setting and increase LPV DA to 1485, LNAV/VNAV DA to 1694, and all MDA 120 feet. Increase LPV visibility all Cats and Circling visibility Cat C ½ SM, LNAV visibility Cat A and Circling visibility Cat A ¼ SM.

MISSED APPROACH:
Climb to 3000 direct FINKO and hold.

ASOS 119.425	MADISON APP CON ★ 135.45 343.7	UNICOM 123.0 (CTAF) 0
------------------------	--	---------------------------------



ELEV 717	TDZE 717
----------	----------

3000

FINKO

VGSI and RNAV glidepath not coincident
(VGSI Angle 4.00/TCH 34).

4 NM
Holding Pattern

CABIG

090°
270°
6000
3000

GP 3.00°
TCH 33

*LNAV only.

CEKDO
3 NM to
RW27

DIYAS
2600

1680*

1.7

1.3

2.7 NM

6.1 NM

CATEGORY	A	B	C	D
LPV DA	1375-2		658 (700-2)	NA
LNAV/VNAV DA	1584-4		867 (900-4)	NA
LNAV MDA	1480-1 763 (800-1)	1480-1¼ 763 (800-1¼)	1480-2½ 763 (800-2½)	NA
CIRCLING	1520-1 803 (900-1)	1520-1¼ 803 (900-1¼)	1560-2½ 843 (900-2½)	NA

REIL Rwy 27 0
MIRL Rwys 9-27 and 18-36 0