

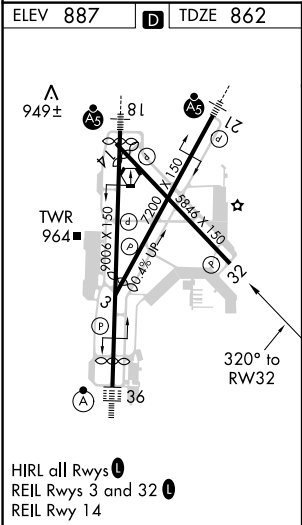
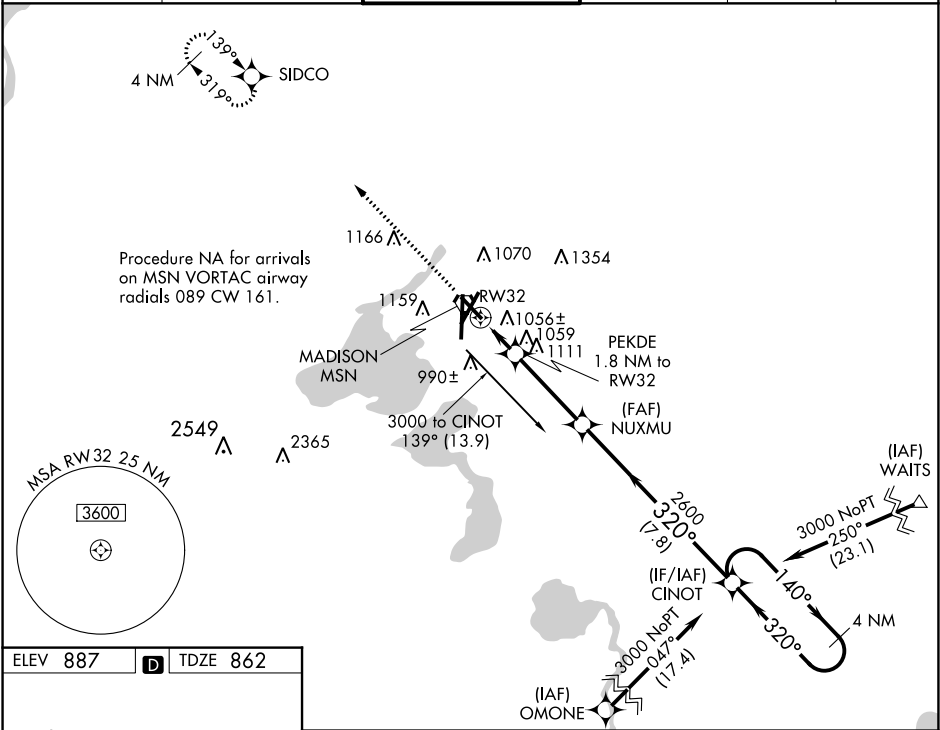
WAAS CH <b>58021</b> <b>W32A</b>	APP CRS <b>320°</b>	Rwy Idg TDZE <b>862</b> Apt Elev <b>887</b>
--	------------------------	---

RNAV (GPS) RWY 32

DANE COUNTY RGNL-TRUAX FIELD (MSN)

<div><div><div></div></div><div>For uncompensated Baro-VNAV systems, LNAV/VNAV NA below -19°C (-2°F) or above 54°C (130°F). DME/DME RNP-0.3 NA. Helicopter visibility reduction below ¾ SM NA.</div></div>	MISSED APPROACH: Climb to 3200 direct SIDCO and hold.
--	---

ATIS <b>124.65 278.3</b>	MADISON APP CON ★ <b>135.45 343.7</b>	MADISON TOWER ★ <b>119.3 (CTAF) 0 257.8</b>	GND CON <b>121.9 348.6</b>	CLNC DEL <b>121.625</b>	UNICOM <b>122.95</b>
-----------------------------	--	--	-------------------------------	----------------------------	-------------------------



3200	SIDCO	NUXMU	CINOT	4 NM Holding Pattern
*LNAV only	PEKDE 1.8 NM to RW32	2600	320°	140° → 3000
	RW32	*1480	2600	GP 3.00° TCH 56
	1.8 NM	3.5 NM	7.8 NM	
CATEGORY	A	B	C	D
LPV DA	1232-1¼ 370 (400-1¼)			
LNAV/VNAV DA	1237-1¼ 375 (400-1¼)			
LNAV MDA	1360-1 498 (500-1)	1360-1¾ 498 (500-1¾)		
CIRCLING	1420-1 533 (600-1)	1460-1 573 (600-1)	1460-1½ 573 (600-1½)	1700-2¾ 813 (900-2¾)