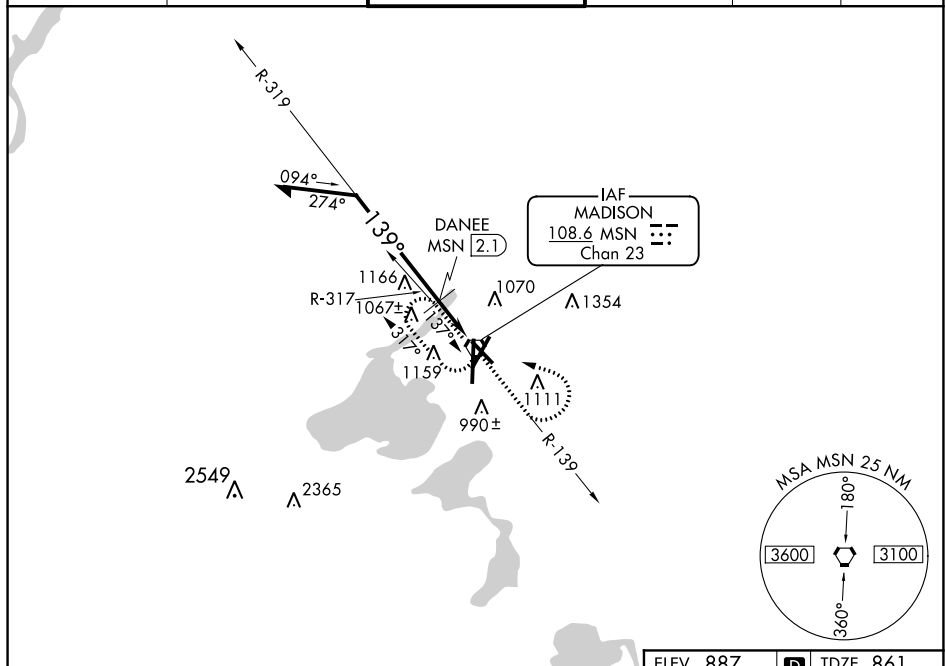


VOR RWY 14  
DANE COUNTY RGNI-TRUAX FIELD (MSN)

**MISSED APPROACH:** Climb to 2700 via MSN R-139 then left turn direct MSN VORTAC and hold.

UNICOM  
122.95

EC-3, 03 DEC 2020 to 31 DEC 2020

Remain within 10 NM

2700

DANEE MSN (2.1)

1580

319°

139°

3.16°

TCH 55

MSN (1.4)

1.2 NM

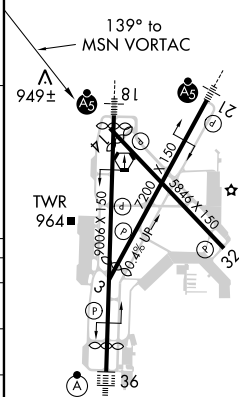
MSN VORTAC

2700

MSN R-139

VGS1 and descent angles not coincident (VGS1 3.00/TCH 45)

ELEV 887		TDZE 861
----------	---	----------



CATEGORY	A	B	C	D
S-14	1580-1 719 (700-1)		1580-2 719 (700-2)	
<b>C</b> CIRCLING	1580-1 693 (700-1)		1580-2 693 (700-2)	1700-2¾ 813 (900-2¾)
DANEE FIX MINIMUMS				
S-14	1320-1 459 (500-1)		1320-1¼ 459 (500-1¼)	1320-1½ 459 (500-1½)
<b>C</b> CIRCLING	1520-1 633 (700-1)		1520-1¾ 633 (700-1¾)	1700-2¾ 813 (900-2¾)

HIRL all Rwy's L  
REIL Rwy's 3 and 32 L  
REIL Rwy 14